

## MOUNTING INFORMATION

Sex nuts or through bolts **are required** for wood and plastic covered composite doors, and any type of door without reinforcements and **recommended** for wood core and metal clad (Kalamein) type doors.

RH SHOWN  
LH OPPOSITE

## TEMPLATE CROSS REFERENCE

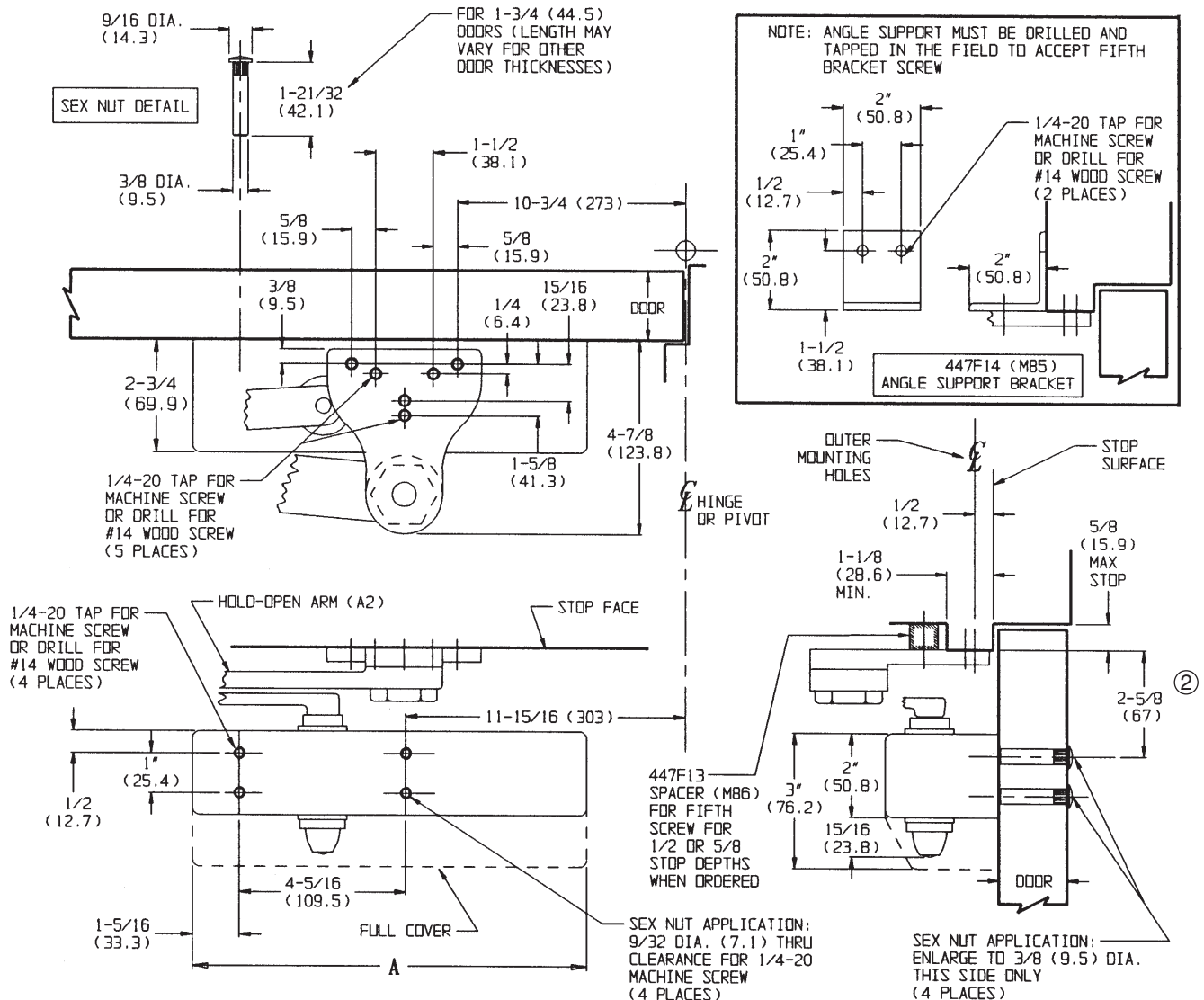
DESCRIPTION	TEMPLATE
DC3210, DC3610 x A3	T30617
DC3210, DC3610 x A4 & A5	T30619
DC3210, DC3610 x A4, A5 & M80	T30620

### NOTES:

- DIMENSIONS GIVEN IN INCHES AND (MM).
- MINIMUM TOP RAIL: 4-3/16 (106.4)
- DIMENSIONS LOCATING CLOSER AND ARM BRACKET FROM CENTERLINE OF HINGE OR PIVOT, ARE FOR 110 DEGREE MAXIMUM OPENING AND APPLY TO CENTERLINE OF HINGE OR PIVOT FOR BUTT, SWING CLEAR, OFFSET AND CENTER HUNG PIVOTS.

**CAUTION:** CLOSER TO BE INSTALLED IN A TRUE HORIZONTAL POSITION TO ENSURE PROPER CLOSER PERFORMANCE.

DESCRIPTION	A
DC3610	10-3/8 (263.5)
DC3210	11-5/8 (295.3)
FULL COVER	



### RESPONSIBILITY

DOOR AND FRAME MANUFACTURERS ARE RESPONSIBLE FOR PROVIDING ADEQUATE CONSTRUCTION OR REINFORCEMENTS FOR PROPER INSTALLATION OF HARDWARE SHOWN. ALL ARCHITECTURAL BUILDERS HARDWARE MUST BE INSTALLED ON PROPERLY REINFORCED DOORS AND FRAMES, REGARDLESS OF TYPE, MATERIAL, OR METHOD OF CONSTRUCTION.

DC3210 Series x A2  
DC3610 Series x A2  
Surface Door Closer  
Parallel Arm Mounting  
By Heavy Duty Hold-Open Arm

**Corbin  
Russwin**  
**ASSA ABLOY**

www.corbinrusswin.com

SUPERSEDES T30618-1 DO NOT SCALE DRAWING  
TEMPLATE NUMBER T30618-2 DATE 04-10