

# INSTALLATION INSTRUCTIONS 2601D

Effective date: December 1, 2022  
 Supercedes: All Previous

**ROCKWOOD®**  
**ASSA ABLOY**

Experience a safer  
 and more open world

**NOT TO SCALE**

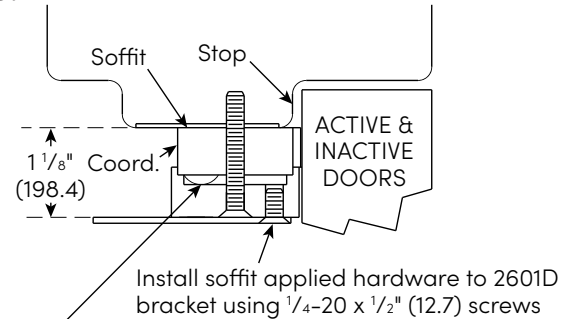
## 2601D INLINE MOUNTING BRACKET

The 2601D Inline Bracket is used to mount parallel arm closers, non-fire rated vertical rod strikes, or any other soffit applied hardware when using the 2600 Series Coordinator. The 2601D bracket mounts through the Coordinator allowing for installation on any frame dimension regardless of the soffit width.

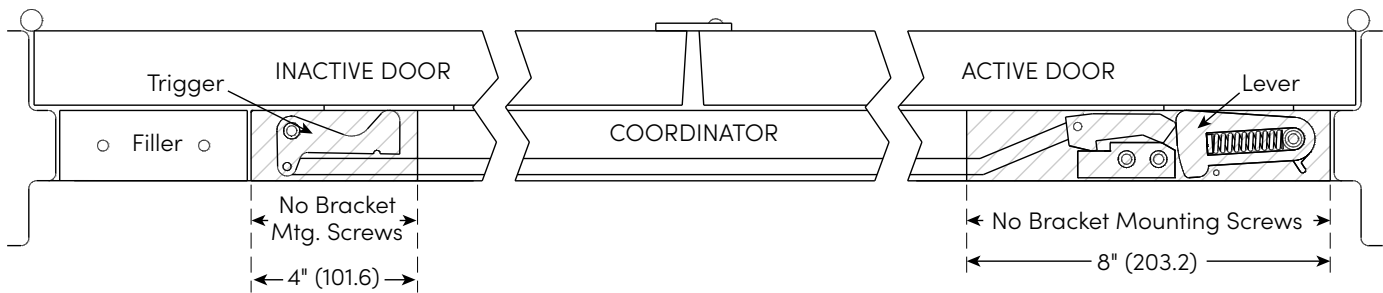
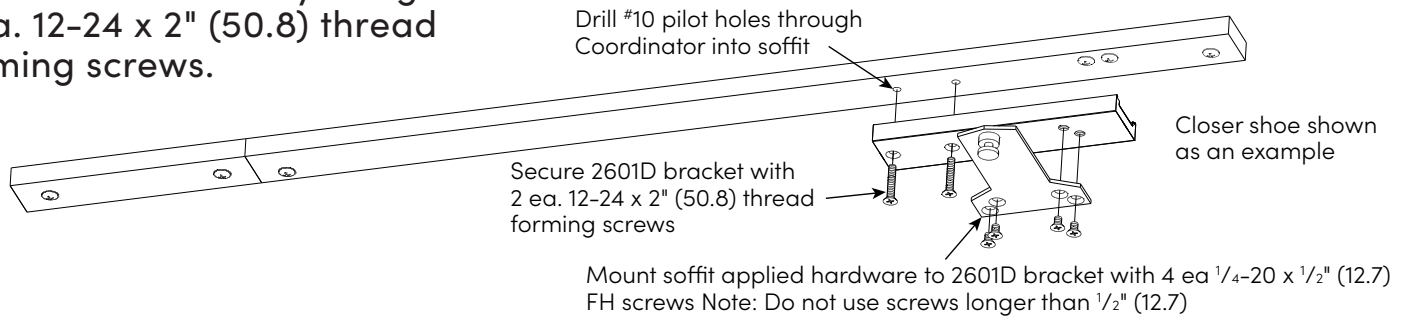
1. Mount the 2600 Series Coordinator per instructions.
2. Position 2601D bracket at desired location.
3. Locate and mark 2601D mounting holes onto Coordinator.

Note: Do not drill in shaded areas highlighted in the drawing below.

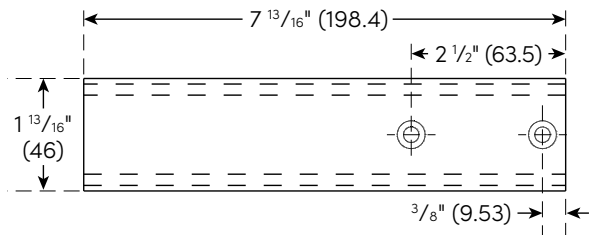
4. Drill 2 ea. #10 pilot holes through Coordinator and into the soffit.
5. Secure 2601D bracket to 2600 series Coordinator by using 2 ea. 12-24 x 2" (50.8) thread forming screws.



2601D bracket can mount over the Coordinator's mounting hardware



6. Drill and tap 2601D bracket for soffit applied hardware.
7. Install soffit applied hardware with 4 ea 1/4-20 x 1/2" (12.7) FH screws.  
 Note: Do not use screws longer than 1/2".



Patent No. 9109388

Rockwood Manufacturing Company  
 300 Main St.  
 Rockwood, PA 15557  
 www.rockwoodmfg.com  
 1 800 458 2424

NOTE: Rockwood reserves the right to make product changes and is not responsible for obsolete template errors. To ensure your template is current please visit our website at [www.rockwoodmfg.com](http://www.rockwoodmfg.com) or call us at 800 458 2424.

Copyright ©2022, ASSA ABLOY Accessories and Door Controls Group, Inc. All rights reserved. Reproduction in whole or in part without the express written permission of ASSA ABLOY Accessories and Door Controls Group, Inc. is prohibited. Printed in the U.S.A. I-2601D 12/22