

MOUNTING INFORMATION


Sex nuts or through bolts *are required* for wood and plastic covered composite doors, and any type of door without reinforcements and *recommended* for wood core and metal clad (Kalamein) type doors.

RH SHOWN
LH OPPOSITE

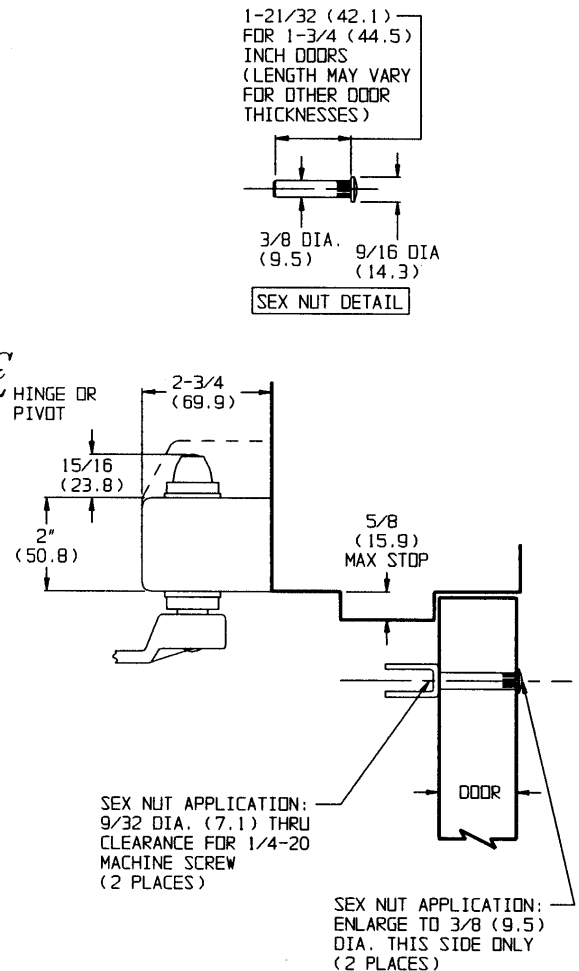
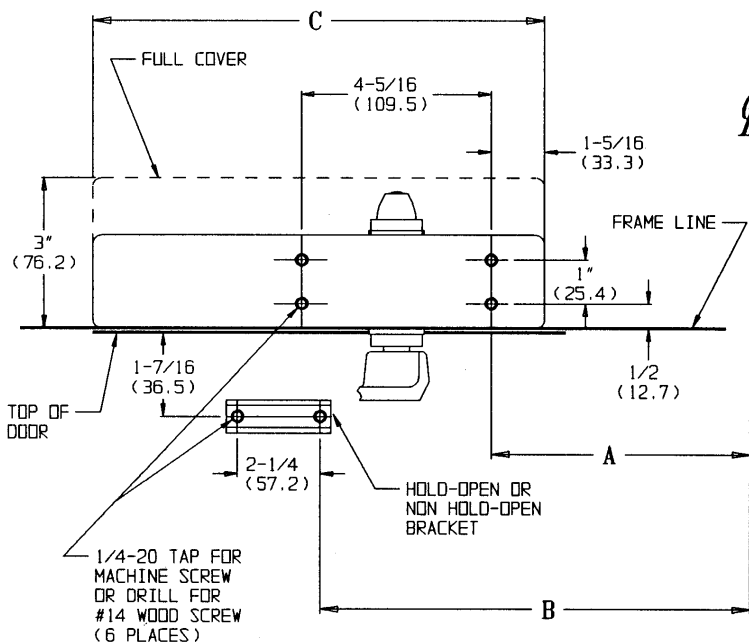
TEMPLATE CROSS REFERENCE	
DESCRIPTION	TEMPLATE
DC3220, DC3620 x M80	T30622
DC3220, DC3620 x M80	T30623

CAUTION: CLOSER TO BE INSTALLED IN A TRUE HORIZONTAL POSITION TO ENSURE PROPER CLOSER PERFORMANCE.

DESCRIPTION	C
DC3620	10-3/8 (263.5)
DC3220	11-5/8 (295.3)
FULL COVER	

OPENING MAXIMUM	A	B	HINGE CONDITION
110°	8-7/8 (225.4)	13-3/8 (339.7)	BUTTS, OFFSET PIVOTS, AND SWING CLEAR HINGES
180°	5-7/8 (149.2)	10-3/8 (263.5)	
 140°	7-3/8 (187.3)	11-7/8 (301.6)	CENTER HUNG

- NOTES:
- DIMENSIONS GIVEN IN INCHES AND (MM).
 - MINIMUM 1-3/4 (44.5) REQUIRED FOR TOP JAMB AND TOP RAIL.
 - DIMENSIONS "A" & "B" APPLY TO CENTERLINE OF HINGE/PIVOT FOR BUTT, SWING CLEAR, OFFSET AND CENTER HUNG PIVOTS.



RESPONSIBILITY

Door and Frame Manufacturers are responsible for providing adequate construction or reinforcements for proper installation of hardware shown. All architectural builders hardware must be installed on properly reinforced doors and frames, regardless of the type, material, or method of construction.

DC3220 SERIES
DC3620 SERIES

SURFACE DOOR CLOSER
TOP JAMB MOUNTING

Corbin Russwin
www.corbinrusswin.com

DO NOT SCALE DRAWING
SUPERSEDES VT30377 DR. KJ
DATE 5/10/93 TEMPLATE NUMBER T30621