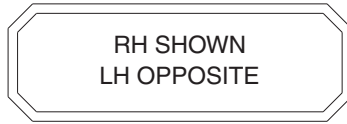


**MOUNTING INFORMATION**

Sex nuts or through bolts are required for wood and plastic covered composite doors, and any type of door without reinforcements and recommended for wood core and metal clad (Kalamein) type doors.



**TEMPLATE CROSS REFERENCE**

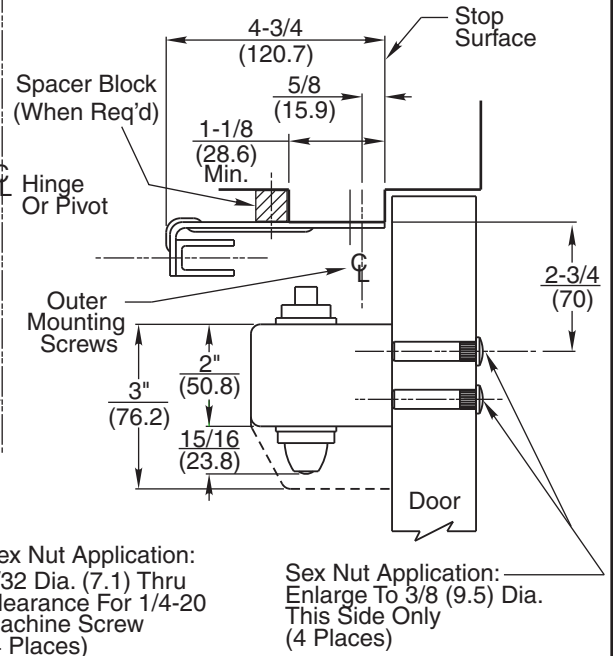
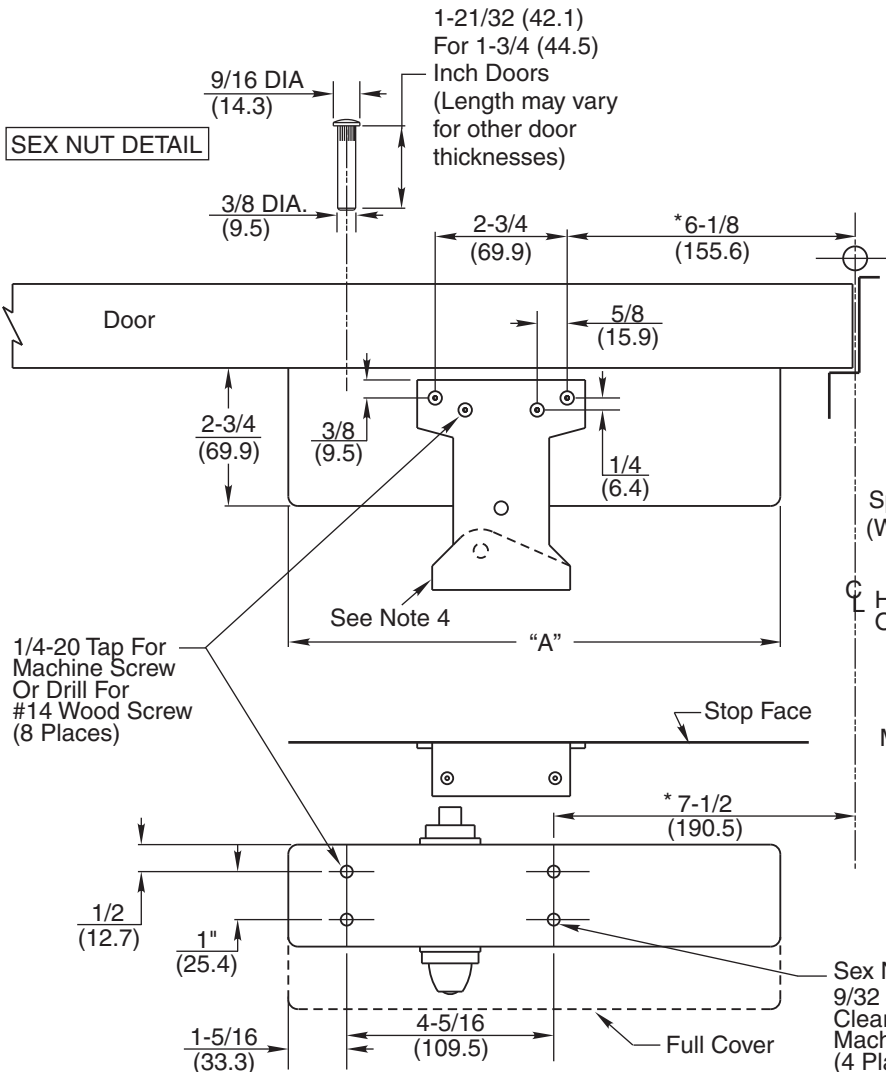
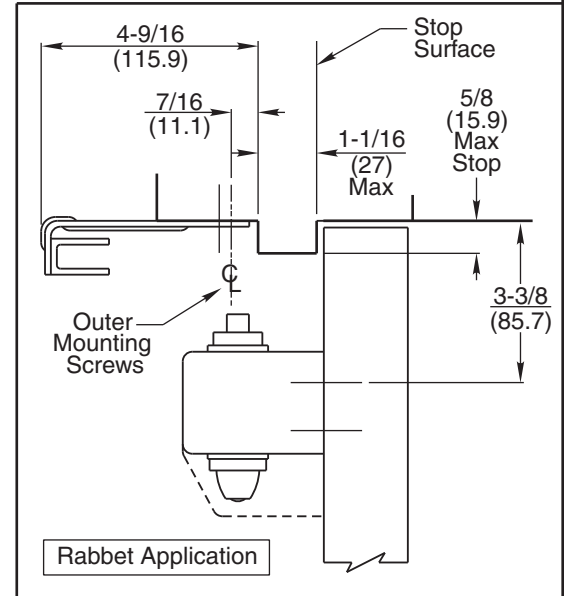
DESCRIPTION	TEMPLATE
DC3210 x M80	T30613
DC3210 x M80 & M83	T30616
DC3210 x M83	T30615
DC3210 x M82	T30614

DESCRIPTION	DIMENSION "A"
DC3210	11-5/8 (295.3)
FULL COVER	

**NOTES:**

- To obtain extra closing force, add 3" (76.2) to dimensions marked by (\*). This will limit degree of door opening to 110°.
- Dimensions given in inches and (mm).
- Minimum Top Rail: 4-9/16 (115.9)
- Parallel arm bracket shown is for non hold-open applications. Bracket mounting for hold-open applications is identical.
- Dimensions marked (\*) apply to centerline of hinge/pivot for butt or swing clear hinges; offset or center pivots.
- Maximum degree of opening for swing clear hinge is 140°.

**CAUTION:** CLOSER TO BE INSTALLED IN A TRUE HORIZONTAL POSITION TO ENSURE PROPER CLOSER PERFORMANCE.



**RESPONSIBILITY**

Door and Frame Manufacturers are responsible for providing adequate construction or reinforcements for proper installation of hardware shown. All architectural builders hardware must be installed on properly reinforced doors and frames, regardless of the type, material, or method of construction.

**DC3210 Series**

**Surface Door Closer  
Parallel Arm Mounting  
(with or without A1)**



www.corbinrusswin.com

Do Not Scale Drawing

Supersedes	VT30376	Dr.	App.
Date	03-11	Template Number	T30612