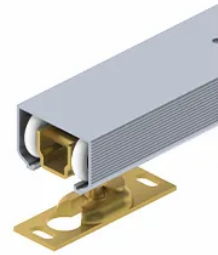


## 9878CS

9878CS

Packaged sets for up to 150 lbs (113 KG) per door and 72", 96" wide openings



## SPECIFICATIONS

**Available Sizes**

- 9878CS - 72 = 72" (1829mm)
- 9878CS - 96 = 96" (2438mm)

**Case Quantity**

6

**Code Compliance**

Meets performance requirements ANSI/BHMA A156.14 (Grade 1) for sliding doors by exceeding 100,000 cycles

**Door Thickness**

1-1/8" - 1-3/4"

**Maximum Door Weight**

150 lbs.

**Notes**

- Track is extruded aluminum jump-proof style with "V" shaped rails
- The 9878CS is the equivalent of previous versions 9678 and 9878CS
- IMPORTANT: The components between new and previous versions are NON-INTERCHANGEABLE

**Optional Features**

Optional Soft-Close (1-269-8651) for doors up to 150 lbs

**Packaged Sets**

- 72" (1829 mm) Pocket Door Set for 3' (914 mm) door
- 96" (2438mm) Pocket Door Set for 4' (1219mm) door

**Product Description**

Pocket Door Kit

**Product Name**

Heavy Duty Aluminum Box Track and Hardware