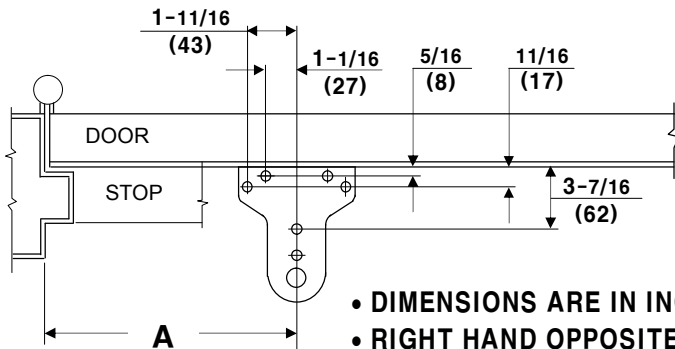
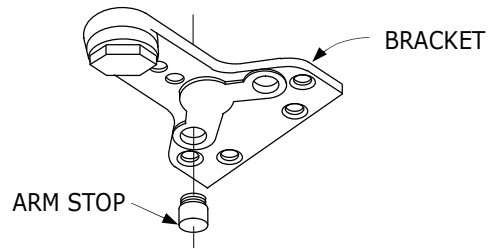


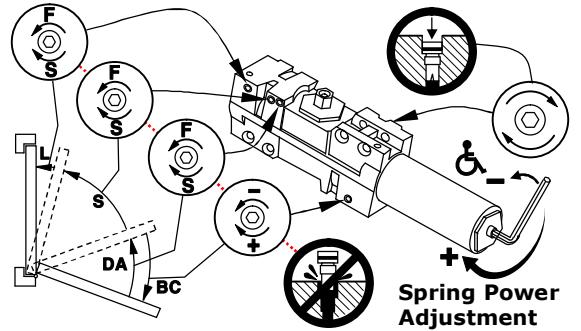
### PARALLEL ARM (PUSH SIDE) MOUNT LEFT HAND DOOR SHOWN



- DIMENSIONS ARE IN INCHES/MM
- RIGHT HAND OPPOSITE
- DO NOT SCALE



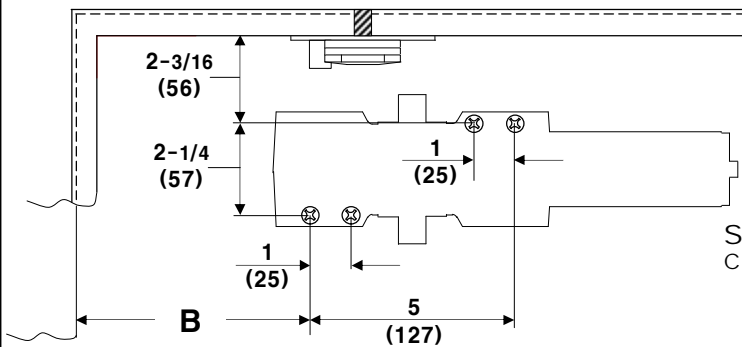
#### DOOR CLOSER ADJUSTMENT



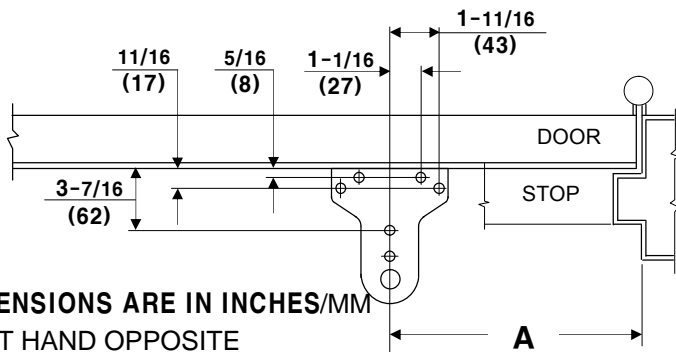
#### SPRING POWER ADJUSTMENT

Clockwise (+) turns increase, counter-clockwise (-) decrease

POWER SIZE	1(BF)	2	3	4	5	6
1 THRU 6	-6	-3	PRESET	+3	+7	+12
1(BF) THRU 4	-12	-6	PRESET	+8	-	-

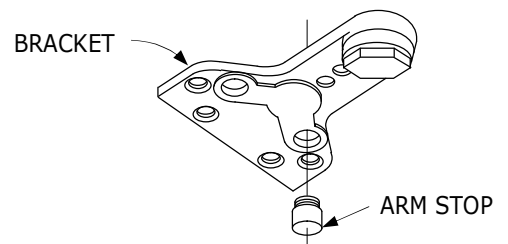
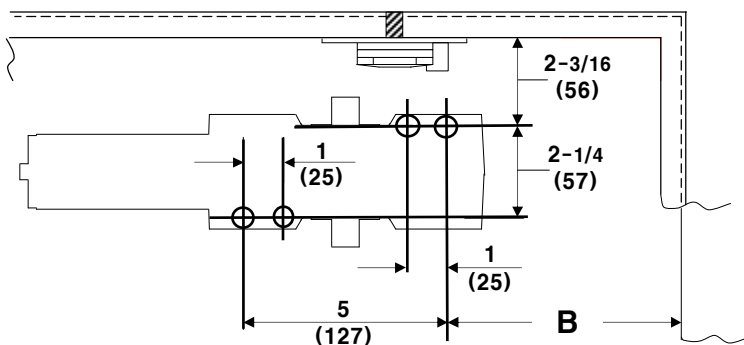


### PARALLEL ARM (PUSH SIDE) MOUNT RIGHT HAND DOOR SHOWN



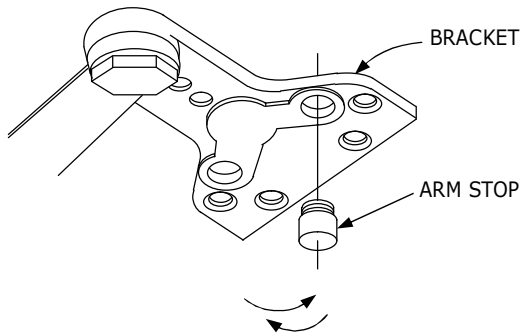
- DIMENSIONS ARE IN INCHES/MM
- LEFT HAND OPPOSITE
- DO NOT SCALE

Door Opening	Dim. A	Dim. B
85°	11-1/8 (283)	9-1/2 (241)
90°	10-1/2 (267)	8-3/4 (222)
100°	9-1/4 (235)	7-5/8 (194)
110°	8-3/8 (213)	6-5/8 (168)



HAND OF ARM BUMPER STOP MUST BE DETERMINED BEFORE BRACKET IS MOUNTED TO FRAME.

Refer to page 1.



INTERCHANGEABLE HANDING OF STOP

### FOR LEFT HAND DOORS

All brackets are shipped assembled for LEFT HAND DOOR. Insert Phillips screw driver tip into ARM STOP and turn clockwise to seat as tightly as possible.

Push filler plug in firmly (if furnished).

### FOR RIGHT HAND DOORS

Pull filler plug out of bracket (if furnished).

Using tip of Phillips screw driver, turn ARM STOP counter-clockwise, remove from bracket. Insert in hole marked "R". Turn clockwise to secure.

Seat ARM STOP as tightly as possible. Push filler plug into other hole (if furnished).

# INSTALLATION SEQUENCE

LEFT HAND DOOR SHOWN – RIGHT HAND DOOR OPPOSITE

**⚠ CAUTION**

IMPROPER INSTALLATION OR ADJUSTMENT  
MAY RESULT IN PERSONAL INJURY OR  
PROPERTY DAMAGE. FOLLOW ALL  
INSTRUCTIONS CAREFULLY.

1. Adjust spring power to match door width or weight as indicated by Power Adjustment Chart shown on page 1.
2. Mount closer on door to dimensions shown on page 1.
3. Attach MAIN ARM as follows.
  - (a) Remove stud at junction between MAIN ARM and FOREARM
  - (b) \*IMPORTANT\* Place wrench on bottom pinion shaft and turn toward hinge edge about 30°
  - (c) Place MAIN ARM on top shaft parallel with door. Secure with screw provided.
4. Attach BRACKET to underside of door stop.
5. Swing door open about 30°. Join main arm and forearm. Install stud and tighten securely.

### IMPORTANT REMARKS

#### REGULATION

Do not allow door to slam closed. INJURY COULD OCCUR!  
A normal closing time from 90° is 4 to 7 seconds, divided evenly between the main (sweep) closing speed and the latching speed. Adjust the MAIN (SWEEP) closing speed first. Then adjust the LATCHING speed. DO NOT REMOVE VALVES = OIL WILL LEAK OUT!!!

CLOCKWISE TURNS DECREASE CLOSING SPEED  
COUNTER-CLOCKWISE TURNS INCREASE CLOSING SPEED  
Adjust both valves in the same manner, providing a smooth transition from main closing speed (sweep) to latching speed.

#### ADJUSTABLE BACK-CHECK FUNCTION

This function is essential to the proper operation of the DS/DSHO RIGID PARALLEL ARM. Use just enough to provide cushioning and limit contact force between the arm and bumper stop (see page 1).

#### ATTACH COVER

Slide cover insert into un-used cutout in cover. Install cover securely using screws provided.

#### HOW TO ENGAGE HOLD-OPEN FUNCTION (OPTIONAL)

A quarter turn to the HOLD-OPEN CONTROL HANDLE engages or disengages hold-open.

