

CLX3300 Series Cylindrical Lever Locksets

PRODUCT CATALOG



Experience a safer
and more open world

Table of Contents

| | |
|---|-----------------------|
| Overview | 3 |
| Certifications | 4 |
| Technical Details - Lever Trim | 5 |
| Lever Trim | 6 |
| Behavioral Health - BHSS Trim | 7 |
| Visual Status Indicators | 8-10 |
| Functions | 11-14 |
| Technical Details - CLX33900 Electrified Lock | 15 |
| Electrical Accessories | 16 |
| Cylinders | 17-19 |
| Latches | 20 |
| Strikes | 21 |
| Quick Codes | 22-23 |
| Finishes | 24 |
| How to Order | 25 |
| How to Specify | 26-29 |

MicroShield®

ASSA ABLOY Group companies offer MicroShield®, an anti-microbial coating for door hardware. MicroShield uses proven silver ion-based technology from Agion®, a leading provider of antimicrobial solutions, to stem the spread of bacteria and other microbes.

MicroShield® is a trademark of ASSA ABLOY Access and Egress Hardware Group, Inc.

MicroShield® Coating

- Revolutionary finish coating available on all Corbin Russwin product lines, utilizes a silver-based antimicrobial compound from Agion Technologies
- As an integral part of the finish coating, MicroShield lasts for the life of the hardware
- MicroShield coating permanently suppresses the growth of bacteria, algae, fungus, mold and mildew. It is effective against a broad spectrum of bacteria.
- Non-toxic and completely safe. The Agion antimicrobial compound is EPA and NSF approved and FDA listed for use in medical and food preparation equipment.
- Applications: Anywhere there is need for a clean environment (hospitals, laboratories, schools, medical centers, daycare, food processing etc.)



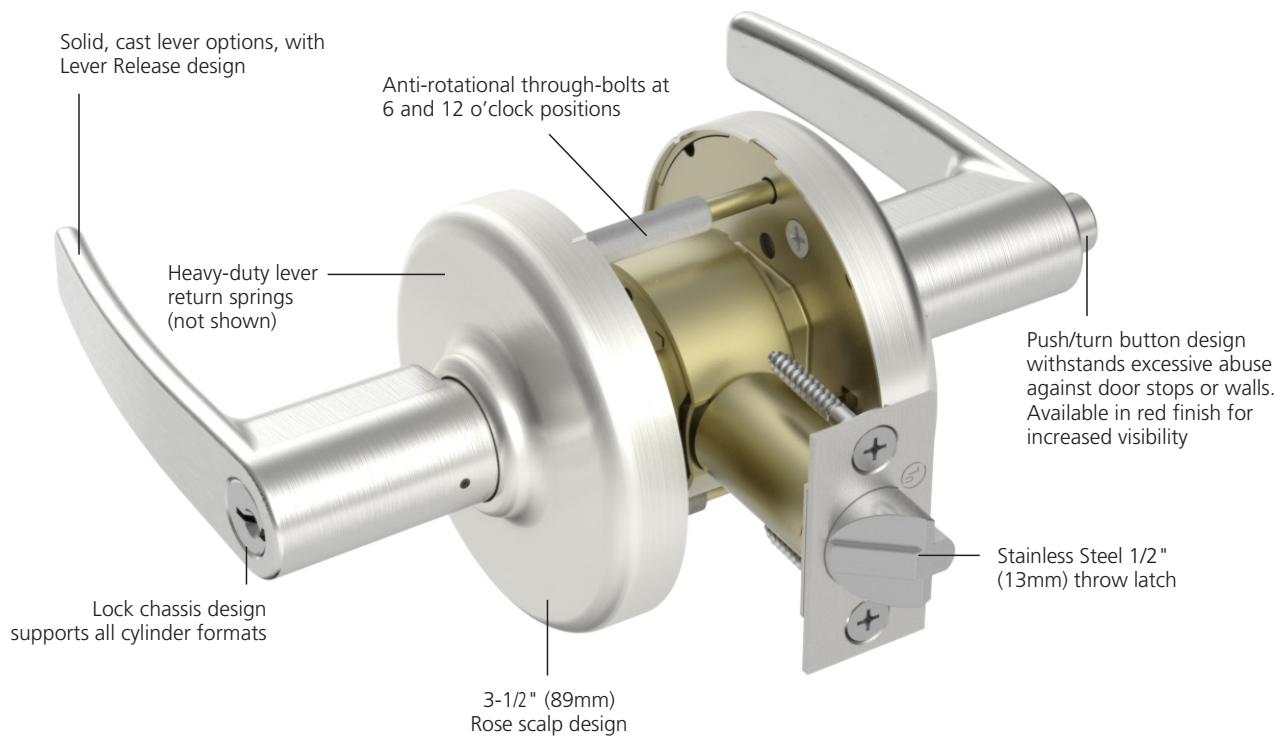
The Agion antimicrobial is not intended as a substitute for good hygiene. Coated products must still be cleaned to ensure the surfaces will be free of destructive microbes. ASSA ABLOY makes no representations or warranties, express or implied, as to the efficacy of the Agion antimicrobial. A copy of the Agion warranty is available upon request. Agion is a registered trademark of Agion Technologies, Inc., Wakefield, MA, USA.

 **WARNING**

This product can expose you to lead which is known to the state of California to cause cancer and birth defects or other reproductive harm. For more information go to www.P65warnings.ca.gov.

Overview

The CLX3300 Series ANSI/BHMA Grade 1 cylindrical lock has the strength to secure high-traffic openings with design options to complement any decor. Manufactured of the highest-quality materials to provide durability, strength, and reliability, it is also available in a vast array of finishes and a variety of decorative levers, so you'll never have to sacrifice style for strength.



APPLICATIONS

- Heavy duty commercial and institutional interior and exterior doors
- Offices
- Schools/Universities
- Hospitals
- Manufacturing facilities



Hurricane

Certifications

CERTIFICATION/COMPLIANCE

| | |
|--|---|
| ANSI/BHMA | Certified ANSI/BHMA A156.2 (2022) Series 4000 — Grade 1 Certified ANSI/BHMA A156.41 |
| UL/cUL | UL/cUL listed to US and Canadian safety standards for 3 hour doors up to 4' x 10' (double doors require M16 option) |
| UL294 | Listed as an Access Control Accessory (CLX33903 & CLX33905) |
| NFPA 80 | Conforms for life safety and property protection, Standard for Fire Doors and Other Opening Protectives |
| Positive Pressure | Meets ANSI/UL 10C, Positive Pressure Fire Test of Door Assemblies |
| ADA | The force required to activate all levers shall be 5 pounds (22.2N) maximum. All levers conform to ADA clear opening width requirements of ANSI A117.1. |
| California State Reference Code (Formerly Title 19, California State Fire Marshal Standard) | All levers with returns comply; levers return to within 1/2" (13mm) of door face |
| Windstorm/Hurricane | All individual components of a total door opening are required to comply with each code. Refer to the Corbin Russwin Website (www.corbinrusswin.com) for specific code compliance listings for both the lock hardware and other door components. |

Any retrofit or other field modification to a fire rated opening can potentially impact the fire rating of the opening, and Corbin Russwin makes no representations or warranties concerning what such impact may be in any specific situation. When retrofitting any portion of an existing fire rated opening, or specifying and installing a new fire-rated opening, please consult with a code specialist or local code official (Authority Having Jurisdiction) to ensure compliance with all applicable codes and ratings.

WINDSTORM CERTIFICATIONS: FLORIDA BUILDING CODES & UL LISTINGS

Corbin Russwin products meet building codes that require hurricane and windstorm certifications, including some of the most stringent building codes as specified in the Florida Building Code, Miami Dade Code and the International Building Code. Listed below are certifications and standards met by the CLX3300 Series locks.

Florida Building Code: FL3067

UL Certification Directory: ZHEM.R21836 – Latching Hardware

| | |
|--------------------------------|---|
| ANSI/SDI A250.13 (2014) | "Testing and Rating of Severe Windstorm Resistant Components for Swinging Door Assemblies" |
| ASTM E330 (2002) | "Standard Test Method for Structural Performance of Exterior Windows, Doors, Skylights and Curtain Walls by Uniform Static Air Pressure Difference" * |
| ASTM E1886 (2005) | "Standard Test Method for Performance of Exterior Windows, Curtain Walls, Doors, and Impact Protective Systems Impacted by Missile(s) and Exposed to Cyclic Pressure Differentials" * |
| ASTM E1996 (2009) | "Standard Specification for Performance of Exterior Windows, Curtain Walls, Doors and Impact Protective Systems Impacted by Windborne Debris in Hurricanes" * |
| (TAS) 201 (1994) | "Impact Test Procedures" * |
| (TAS) 202 (1994) | "Standard Test Method for Structural Performance of Exterior Windows, Doors, Skylights and Curtain Walls by Uniform Static Air Pressure Difference" * |
| (TAS) 203 (1994) | "Criteria for Testing Products Subject to Cyclic Wind Pressure Loading" * |

* Published in the 7th Edition (2020), "Florida Building Code" (FBC), State Product Approval Number FL3067

Technical Details

| | |
|---------------------------------|---|
| Door Prep | ANSI/SDI A250.14 |
| Door Thickness | 1-3/4" - 2" (44mm - 51mm) standard 1-3/8" (35mm) thick door, specify Quick Code D138 for Adapter plates Over 2" (51mm) up to 2-1/4" (57mm), specify Quick Code D214 Over 2-1/4" (57mm) up to 6" (152mm) available by special application, contact Technical Product Support |
| Minimum Stile | 4-1/2" (114mm) |
| Handing | Non-handed |
| Backset | 2-3/4" (70mm) backset w/ 1-1/8" (29mm) (front (standard) 2-3/8" (60mm) backset w/ 1" (25mm) wide front (specify Quick Code B238) 3-3/4" (95mm) backset w/ 1-1/8" (29mm) front (specify Quick Code B334) 5" (127mm) backset w/ 1-1/8" (29mm) front (specify Quick Code B500) |
| Latchbolt | Stainless steel, 1/2" (13mm) throw Optional: Brass, 3/4" (19mm) throw deadlocking fire latch for pair of doors (specify Quick Code M16) |
| Front | Wrought brass, bronze, or stainless steel Optional: rounded corners (specify Quick Code M13) 2-1/4" x 1-1/8" (57mm x 29mm) standard for 2-3/4" (70mm), 3-3/4" (95mm) and 5" (127mm) backset 2-1/4" x 1" (57mm x 25mm) standard for 2-3/8" (60mm) backset Accommodates flat doors and doors beveled 1/8" in 2" (3mm in 51mm) |
| Strike | Wrought brass or stainless steel ANSI curved lip standard, 4-7/8" x 1-1/4" x 1-1/4" (124mm x 32mm x 32mm) lip to center Optional strikes, lip lengths and ANSI wrought strike box available; see page 21 |
| Cylinder | Brass, 6-pin L4 keyway, 0-bitted standard, see Quick Codes page 22 |
| Keys | Two nickel silver change keys per lock standard |
| Masterkeying | Can be master keyed or grand master keyed Construction key systems available |
| Lead Lining | Lead provided between lockbody and spring housing (specify Quick Code M28) |
| Tactile Levers | Knurling (etching) or abrasive coating (surface tape) applied to backside of levers (see Quick Codes page 23) |
| Finishes | See page 24 |
| Behavioral Health | Compatible with BHSS trim (see page 7) |
| Visual Status Indicators | Compatible with VSL trim (see page 8) |
| Warranty | Ten-year limited |

Strength & Durability

- UL Cycle above and beyond test completed at 20 Million Cycles. Verification ID: V875753
- Exceeds 3,100 in-lb abusive locked lever torque with no entry while maintaining egress (2.6 times ANSI/BHMA A156.2 requirements)
- Exceeds 1,600 lbs offset lever pull with no entry for protection against attacks (8 times ANSI/BHMA A156.2 requirements)
- Latch retraction with 100lb preload (2 times ANSI/BHMA A156.2) while maintaining ANSI/BHMA requirements for operation in warped doors
- No access with minimum 100 vertical impacts for protection against vandalism attempts (20 times ANSI/BHMA A156.2 requirements)
- Independent return springs allow lock to exceed ANSI/BHMA A156.2 Grade 1 cycle requirements without lever sag
- Innovative push/turn button design to withstand excessive abuse against door stops or walls.

Flexibility

- Lock chassis design supports all cylinder formats allowing flexibility for from fixed core to interchangeable core cylinders.
- High Security and security key systems available (Access 3, Pyramid, etc.)
- Patented adjustable push/turn button for easy door thickness adjustment.
- Lever Release freewheeling levers standard for vandal resistance; rigid lever optional.

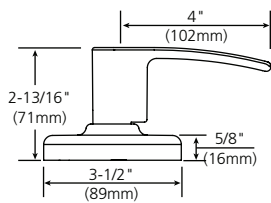
Broad Offering

- Available with 28 mechanical and 2 electrified functions
- 14 finishes plus MicroShield® options
- Multiple lever options including decorative designs, behavioral health and visual status indicators

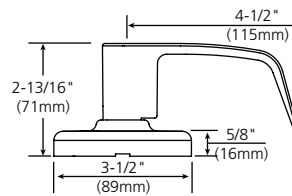
Lever Trim

LEVERS - SOLID CAST ZINC

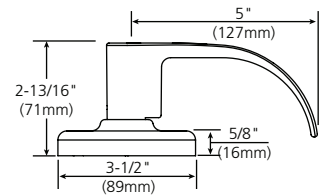
**Armstrong
AZ**



**Newport*
NZ**

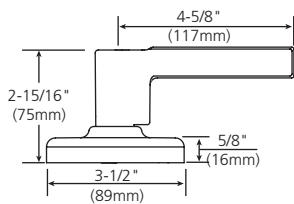


**Princeton*
PZ**

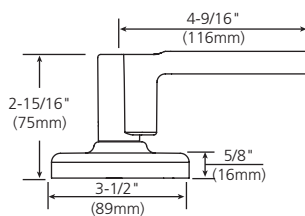


DECORATIVE LEVERS

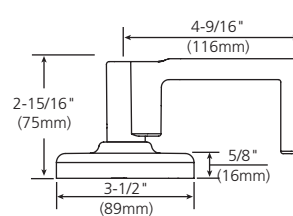
102



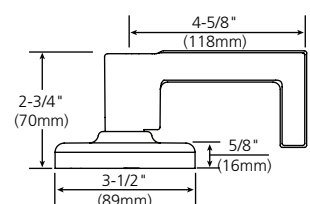
106



123*



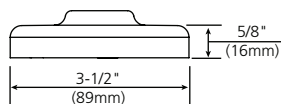
124*



*Lever with return to within 1/2" of door face.

ROSE Wrought Brass

D

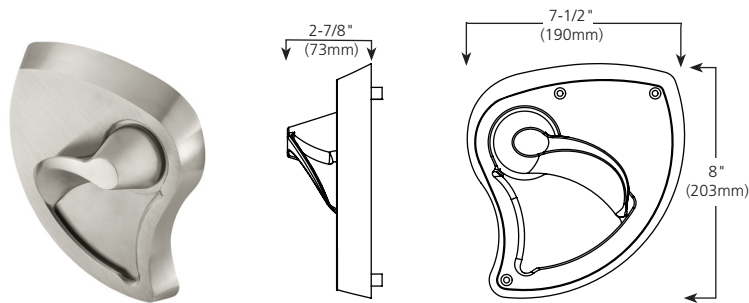



Behavioral Health

Part of the Behavioral Health Series® of products, the CLX3300 Series cylindrical lock with BHSS trim has tapered surfaces and an integrated lever and escutcheon, bringing an elegant style to behavioral health environments. The BHSS trim is listed for low, medium and high risk areas in the widely recognized New York State Office of Mental Health (NYS-OMH) Patient Safety Standard.* The heavy-duty design and ANSI/BHMA Grade 1 strength of the CLX3300 Series withstands abuse in any environment.

BHSS

Lever & Escutcheon - Cast Stainless Steel



| | |
|-----------------------------|--|
| Door Prep | ANSI/SDI A250.14 modified. Refer to template T31261 |
| Door Thickness | Adjustable 1-3/4" - 2" (44mm - 51mm) |
| Minimum Stile | 8-1/2" (216mm) |
| Handing | Handed - must be specified on order |
| Backset | 2-3/4" (70mm) backset w/ 1-1/8" (29mm) front (standard) 3-3/4" (95mm) backset w/ 1-1/8" (29mm) front (specify Quick Code B334) 5" (127mm) backset w/ 1-1/8" (29mm) front (specify Quick Code B500) |
| Latchbolt | Stainless steel, 1/2" (13mm) throw |
| Front | Wrought brass, bronze, or stainless steel 2-1/4" x 1-1/8" (57mm x 29mm) standard Accommodates flat doors and doors beveled 1/8" in 2" (3mm in 51mm) |
| Strike | Wrought brass or stainless steel ANSI curved lip standard, 4-7/8" x 1-1/4" x 1-1/4" (124mm x 32mm x 32mm) lip to center Optional strikes, lip lengths and ANSI wrought strike box available; see page 21 |
| Cylinder | Brass, 6-pin L4 keyway, 0-bitted standard. See Quick Codes page 22. |
| Keys | Two nickel silver change keys per lock standard |
| Masterkeying | Can be master keyed or grand master keyed Construction key systems available |
| Lead Lining | Lead provided between lockbody and spring housing (specify Quick Code M28) |
| Fasteners | Security pin Torx® standard for exposed fasteners |
| Finishes | 630, 630C |
| Functions | Available with functions as shown with the BHSS icon on pages 11-14  |
| Outside Locked Lever | Free-wheeling outside locked levers provided standard. For rigid levers specify Quick Code M200* |
| Warranty | Ten-year limited mechanical and two-year limited electronics |

*Although this product is better designed for behavioral health applications than traditional trim, it does not eliminate the risk that an object can be affixed to, or around it. A lockset function that requires a rigid lever when locked or a push/turnbutton may introduce a ligature opportunity. Refer to [Patient Safety Standards Guidelines](https://omh.ny.gov/omhweb/patient_safety_standards/) for the latest approved products (https://omh.ny.gov/omhweb/patient_safety_standards/).

Indicators

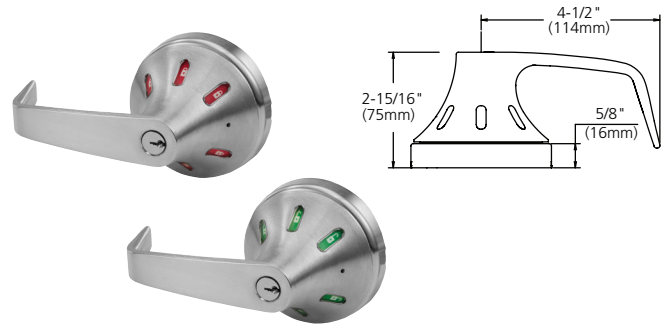
The CLX3300 Series cylindrical lock with status indicators, is the ultimate intersection of security and privacy. Engineered for easy installation in any space, it ensures instant visibility of the door's lock status. Featuring six customizable status indicator windows for optimal visibility, it offers indicators for both sides of the door, one-motion egress, non-handed installation, and keyed functions. Built on the robust CLX3300 Series lock body, it exceeds Grade 1 standards, making it ideal for high-traffic restrooms, classrooms, or rooms requiring increased privacy.


FEATURES

- Patented design
- Inside, outside or **both** sides of the door
 - Indicator option code must be specified, see page 9.
- Highly visible from all angles
- Non-handed
- Multiple door thickness options
- Available with a variety of functions

NVSL

Lever - Solid Cast Zinc
Rose - Wrought Brass



| | |
|-----------------------------|---|
| Door Prep | ANSI/SDI A250.14 |
| Door Thickness | 1-3/4" (44mm) standard - accomodates 1-11/16" - 1-15/16" (43mm - 49mm) doors 1-3/8" (35mm) specify Quick Code D138 for Adapter plates 2" (51mm) specify Quick Code D200 - accomodates 1-15/16" - 2-1/8" (49mm - 54mm) doors 2-1/4" (57mm) specify Quick Code D214 - accomodates 2-1/8" - 2-5/16" (54mm - 59mm) doors |
| Minimum Stile | 4-1/2" (114mm) |
| Handing | Non-handed |
| Backset | 2-3/4" (70mm) backset w/ 1-1/8" (29mm) front (standard) 2-3/8" (60mm) backset w/ 1" (25mm) wide front (specify Quick Code B238) 3-3/4" (95mm) backset w/ 1-1/8" (29mm) front (specify Quick Code B334) 5" (127mm) backset w/ 1-1/8" (29mm) front (specify Quick Code B500) |
| Latchbolt | Stainless steel, 1/2" (13mm) throw Optional: Brass, 3/4" (19mm) throw deadlocking fire latch for pair of doors (specify Quick Code M16) |
| Front | Wrought brass, bronze, or stainless steel Optional: rounded corners (specify Quick Code M13) 2-1/4" x 1-1/8" (57mm x 29mm) standard for 2-3/4" (70mm), 3-3/4" (95mm) and 5" (127mm) backset 2-1/4" x 1" (57mm x 25mm) standard for 2-3/8" (60mm) backset Accommodates flat doors and doors beveled 1/8" in 2" (3mm in 51mm) |
| Strike | Wrought brass or stainless steel ANSI curved lip standard, 4-7/8" x 1-1/4" x 1-1/4" (124mm x 32mm x 32mm) lip to center Optional strikes, lip lengths and ANSI wrought strike box available; see page 21 |
| Cylinder | Brass, 6-pin L4 keyway, 0-bitted standard. See Quick Codes page 22. |
| Keys | Two nickel silver change keys per lock standard |
| Masterkeying | Can be master keyed or grand master keyed Construction key systems available |
| Lead Lining | Lead provided between lockbody and spring housing (specify Quick Code M28) |
| Finishes | See page 24 |
| Functions | Available with functions as shown on pages 11-14 with the VSL icon  |
| Outside Locked Lever | Free-wheeling outside locked levers provided standard. For rigid levers specify Quick Code M200 |
| Warranty | Ten-year limited |

Indicators

FUNCTIONS

Indicators are available with the following CLX3300 Series functions.

| Type | Function | Function Description | ANSI # |
|-----------------|----------|---|--------|
| Non-Cylinder | CLX3320 | Privacy, Bedroom or Bathroom | F76A |
| | CLX3330 | Privacy, Bedroom or Bathroom | F76A |
| | CLX3340 | Patio or Privacy | F77A |
| | CL3320H | Hospital Privacy | — |
| | CLX3349 | Keyed Privacy Indicator (Indicator Both Sides only) | — |
| | CLX3351 | Entrance or Office | F109 |
| Single Cylinder | CLX3355 | Classroom | F84 |
| | CLX3357 | Storeroom or Closet | F86 |
| | CLX3361 | Entry or Office | F82A |
| | CLX3375 | Corridor/Dormitory (Indicator Outside only) | F90 |
| | CLX3376 | Corridor/Dormitory | — |
| | CLX3393 | Service Station | F92 |
| Double Cylinder | CLX3352 | Intruder Classroom (Indicator Inside only*) | F110 |

*Provided standard with Key Turn Indicator as shown on page 10.

HOW TO ORDER

When ordering CLX3300 Series indicator trim, the NVSL trim designation must be specified in addition to the indicator option code. If indicators are specified on one side of the door only, the non-indicator side will be supplied with NZD trim unless otherwise ordered.

HOW TO ORDER EXAMPLES

Indicator Outside Only

| Function | Outside Design & Trim | Inside Design & Trim | Hand | Finish | Options |
|----------|-----------------------|----------------------|------|--------|---------|
| CLX3320 | NVSL | NZD | RH | 626 | V30 |

Privacy function with indicator on **outside only in green/red**. Inside would be provided with NZD trim.

Indicator Inside Only

| Function | Outside Design & Trim | Inside Design & Trim | Hand | Finish | Options |
|----------|-----------------------|----------------------|------|--------|---------|
| CLX3320 | 102D | NVSL | RH | 626 | V06 |

Privacy function with indicator on **inside only in white/red**. Outside would be provided with 102D trim.

Indicator Both Sides

| Function | Design | Trim | Hand | Finish | Options |
|----------|--------|------|------|--------|---------|
| CLX3320 | N | VSL | RH | 626 | V33 |

Privacy function with indicator on **both sides in green/red**.

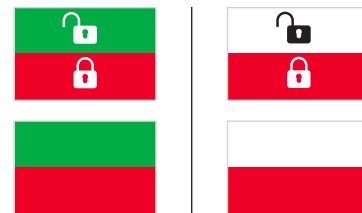
INDICATOR OPTION CODES

CLX3300 Series indicator option codes are designed to convey color and side of door desired in one simple code. To order, specify option code.

| Single Indicator | | | |
|------------------|----------------|----------------|------------------|
| Option Code | Outside | Inside | Color |
| V30 | Indicator Trim | Standard Trim | Green/Red - Icon |
| V60 | Indicator Trim | Standard Trim | White/Red - Icon |
| V03 | Standard Trim | Indicator Trim | Green/Red - Icon |
| V06 | Standard Trim | Indicator Trim | White/Red - Icon |

| Double Indicator | | | |
|------------------|----------------|----------------|---------------------|
| Option Code | Outside | Inside | Color |
| V33 | Indicator Trim | Indicator Trim | Green/Red - Icon |
| V66 | Indicator Trim | Indicator Trim | White/Red - Icon |
| V77^ | Indicator Trim | Indicator Trim | Green/Red - No Icon |
| V88^ | Indicator Trim | Indicator Trim | White/Red - No Icon |

^Available with CLX3349 function only



Indicators

RED BUTTON OPTION

The CLX3300 Series locksets are available with an optional red push or turn button for increased visibility to status.

Providing the red push button allows users to easily see if the button is pushed in to indicate the outside lever is locked.

Features

- Available for all push/turn button functions
- Bright red powder coat finish to easily see from a distance
- Economical solution for status indication

How to Order

Specify option code "RPB".

Available with the following functions:



| Type | Function | Function Description | ANSI # |
|-----------------|----------|--------------------------------|--------|
| Non- Cylinder | CLX3320 | Privacy Em Key | F76A |
| | CLX3330 | Privacy Coin turn | F76A |
| | CLX3320H | Hospital Privacy (Inside only) | — |
| | CLX3340 | Patio | F77A |
| Single Cylinder | CLX3329 | Hotel | F93 |
| | CLX3349 | Keyed Privacy Indicator | — |
| | CLX3351 | Entry | F109 |
| | CLX3361 | Entry | F82A |
| | CLX3375 | Dormitory | F90 |
| | CLX3376 | Dormitory | — |
| | CLX3393 | Service Station | F92 |

Order Example

| Function | Trim | Finish | Hand | Option |
|----------|------|--------|------|--------|
| CLX3320 | NZD | 626 | RH | RPB |

KEY TURN INDICATOR

The CLX3352 Classroom Intruder function lockset allows locking of the outside lever from either side with the key. The Key Turn Indicator is provided standard for the inside lever on this function and in a panic situation, it serves as a quick reference for locking the door. Egress is always possible with the "anti-panic" feature, which keeps the outside lever locked if the inside lever is activated.



Functions

| Outside | Inside | Series/Function | Type | ANSI No. | Function Description |
|---------|--------|-----------------|------------------------------|----------|---|
| | | CLX3310 | Passage or Closet | F75 | <ul style="list-style-type: none"> Latchbolt by lever either side Both levers always free |
| | | CLX3320 | Privacy, Bedroom or Bathroom | F76A | <ul style="list-style-type: none"> Outside lever locked by push button (lever handle is freewheeling in locked position) Outside lever unlocked by emergency release tool outside, by rotating inside lever or by closing door Inside lever always free |
| | | CLX3330 | Privacy, Bedroom or Bathroom | F76A | <ul style="list-style-type: none"> Outside lever locked by push button (lever handle is freewheeling in locked position) Outside lever unlocked by emergency cointurn outside, by rotating inside lever or by closing door Inside lever always free |
| | | CLX3320H | Hospital Privacy | — | <ul style="list-style-type: none"> Outside lever locked by inside push button (lever handle is freewheeling in locked position) Outside lever unlocked by simultaneously depressing outside pushbutton while rotating lever Rotating inside lever or closing door also unlocks outside lever Outside lever handle is freewheeling when locked |
| | | CLX3320TO | Time Out Lock | — | <ul style="list-style-type: none"> Latchbolt by lever either side (passage) unless push button depressed and held by caretaker (detention side becomes freewheeling). Lock returns to passage mode upon release of push button. Push button automatically releases when caretaker releases push button Both levers always free |
| | | CLX3329 | Hotel or Motel | F93 | <ul style="list-style-type: none"> Deadlocking latchbolt by lever inside or by key outside Push button shuts out all keys except emergency key, and projects occupancy indicator in face of cylinder (lever handle is freewheeling in locked position) Push button released by turning inside lever or by closing door, unless push button has been fixed in locked position by spanner key (provided). When push button is fixed in locked position by spanner key, lock is operable only by emergency key. Outside lever always locked Inside lever always free Not available with other manufacturers keyways |
| | | CLX3332 | Institutional or Utility | F87 | <ul style="list-style-type: none"> Deadlocking latchbolt by key either side (lever handles are freewheeling in locked position) Should be used only in office or room with multiple entries Keyed alike unless otherwise specified |
| | | CLX3340 | Patio or Privacy | F77A | <ul style="list-style-type: none"> Deadlocking latchbolt by lever Outside lever locked by push button (lever handle is freewheeling in locked position) Outside lever unlocked by operating inside lever or closing door Inside lever always free Should not be used in rooms that have no other entrance |
| | | CLX3340NT | Exit Latch | F89 | <ul style="list-style-type: none"> Deadlocking latchbolt by lever inside Outside lever always locked (lever handle is freewheeling in locked position) Inside lever always free |

Indicates optional interchangeable core available; see Quick Codes, page 22.

Indicates freewheeling lever in locked position. Specify Quick Code M200 for rigid lever in locked position.

Indicates function available with BHSS trim.

Indicates function available with RPB option.

Indicates function available with VSL trim.

Functions

| Outside | Inside | Series/Function | Type | ANSI No. | Function Description |
|---------|--------|-----------------|---|----------|---|
| | | CLX3349 | Keyed Privacy Indicator | — | <ul style="list-style-type: none"> • Deadlocking latchbolt by key in outside lever or by rotating inside lever (lever handle is freewheeling in locked position) • Outside lever locked at all times with indicator displaying Green or White • Pushing button in inside lever changes status of indicator to Red on both sides • Rotating inside lever or closing door releases button and returns status of indicator to Green or White • Inside lever always free • Function only available with VSL trim on both sides • Function only available with V77 or V88 option codes <p>Note: Pushbutton changes indicator status only. Latchbolt always operated by key.</p> |
| | | CLX3351 | Entrance or Office | F109 | <ul style="list-style-type: none"> • Deadlocking latchbolt by lever either side, except when turn button locks outside lever. Pushing turn button in locks outside lever, requiring use of key outside to unlock. (Lever handle is freewheeling in locked position) • Turning inside lever unlocks outside lever • Pushing in and turning button locks outside lever, requiring key at all times. Turning inside lever does not unlock outside lever until button is manually turned to unlocked position. • Inside lever always free |
| | | CLX3352 | Classroom Intruder | F110 | <ul style="list-style-type: none"> • Deadlocking latchbolt by inside lever or outside lever except when key inside or outside locks outside lever (lever handle is freewheeling in the locked position) • Outside lever is locked and unlocked by turning the key in the inside or outside lever • Inside lever always free <p>Note: Inside lever engraved with "Lock" arrow showing direction to rotate key to lock.</p> |
| | | CLX3355 | Classroom | F84 | <ul style="list-style-type: none"> • Deadlocking latchbolt by lever either side, except when key outside locks outside lever (lever handle is freewheeling in locked position) • Outside lever unlocked by key outside • Inside lever always free |
| | | CLX3357 | Storeroom or Closet | F86 | <ul style="list-style-type: none"> • Deadlocking latchbolt by key in outside lever or by rotating inside lever (lever handle is freewheeling in locked position) • Inside lever always free |
| | | CLX3359 | Barrier Free Storeroom or Public Restroom | — | <ul style="list-style-type: none"> • Deadlocking latchbolt by inside lever • Key outside unlocks outside lever to retract latchbolt • Key is retained in unlock mode • When key is removed outside lever is locked (lever handle is freewheeling in locked position) • Inside lever always free |
| | | CLX3361 | Entry or Office | F82A | <ul style="list-style-type: none"> • Deadlocking latchbolt by lever either side, except when push button locks outside lever • Push button released by turning inside lever or by key in outside lever (lever handle is freewheeling in locked position) • Closing door does not release push button • Inside lever always free |

Indicates optional interchangeable core available; see Quick Codes, page 22.

Indicates freewheeling lever in locked position. Specify Quick Code M200 for rigid lever in locked position.

Indicates function available with BHSS trim.

Indicates function available with RPB option.

Indicates function available with VSL trim.

Functions

| Outside | Inside | Series/Function | Type | ANSI No. | Function Description |
|---------|--------|-----------------|----------------------------------|----------------|--|
| | | CLX3362 | Communicating | F80 | <ul style="list-style-type: none"> Deadlocking latchbolt by lever either side, except when key in either lever locks and unlocks the lever independently of the other (lever handle is freewheeling in locked position) Keyed alike unless otherwise specified Should be used only in office or room with multiple entries |
| | | CLX3372 | Apartment, Exit or Public Toilet | F88 | <ul style="list-style-type: none"> Deadlocking latchbolt by lever either side, except when key inside locks outside lever (lever handle is freewheeling in locked position) Key outside retracts latchbolt Key inside unlocks outside lever Inside lever always free Keyed alike unless otherwise specified |
| | | CLX3375 | Corridor/Dormitory Lock | F90 | <ul style="list-style-type: none"> Deadlocking latchbolt by lever either side except when pushbutton or key locks outside lever Pushbutton released by turning inside lever or by closing door Depressed pushbutton indicates door is locked When outside lever is locked by key, it can only be unlocked by key Inside lever always free |
| | | CLX3376 | Corridor/Dormitory Lock | F90 (Modified) | <ul style="list-style-type: none"> Deadlocking latchbolt by lever either side except when pushbutton or key locks outside lever Pushbutton released by turning inside lever or by closing door Depressed pushbutton indicates door is locked When outside lever is locked by push button or key, it can be unlocked by key, turning inside lever or closing door Inside lever always free |
| | | CLX3380 | Passage Lever x Blank Plate | F111 | <ul style="list-style-type: none"> Deadlocking latchbolt by lever Lever on one side; blank plate on other side Lever always free For single or double communicating doors |
| | | CLX3381 | Classroom x Blank Plate | F113 | <ul style="list-style-type: none"> Deadlocking latchbolt by lever, except when lever is locked by key (lever handle is freewheeling in locked position) Lever on one side; blank plate on other side Key unlocks lever |
| | | CLX3382 | Store Door Lock | F91 | <ul style="list-style-type: none"> Deadlocking latchbolt by lever either side, except when both levers are locked by key from either side (lever handle is freewheeling in locked position) Keyed alike unless otherwise specified Should be used only in office or room with multiple entries |
| | | CLX3383 | Storeroom x Blank Plate | F112 | <ul style="list-style-type: none"> Deadlocking latchbolt by key in lever (lever handle is freewheeling in locked position) Lever always locked Lever on one side; blank plate on other side |
| | | CLX3390 | Passage Lever x Turnpiece | — | <ul style="list-style-type: none"> Deadlocking latchbolt by lever or by turnpiece Lever on one side; turnpiece on other side Lever and turnpiece always free |

Indicates optional interchangeable core available; see Quick Codes, page 22.


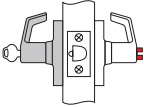

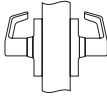
Indicates freewheeling lever in locked position. Specify Quick Code M200 for rigid lever in locked position.


Indicates function available with BHSS trim.

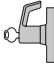
Indicates function available with RPB option.

Indicates function available with VSL trim.


Functions

| Outside | Inside | Series/Function | Type | ANSI No. | Function Description |
|---|---|-----------------|-----------------|----------|---|
|  |  | CLX3393 | Service Station | F92 | <ul style="list-style-type: none"> • Deadlocking latchbolt by lever • Outside lever locked by slotted push button (lever handle is freewheeling in locked position) • When slotted push button is pushed in and turned, outside lever becomes freewheeling and deadlocking latch is activated. Outside lever is unlocked by using key or by rotating inside lever, when slotted push button returned to original position. • Inside lever always free |
| |  | CLX3350 | Half Dummy Trim | — | <ul style="list-style-type: none"> • Lever acts as pull only; no operation • Lever is rigid |
| |  | CLX3370 | Full Dummy Trim | — | <ul style="list-style-type: none"> • Levers act as pulls only; no operation • Levers are rigid |

 Indicates optional interchangeable core available; see Quick Codes, page 22.

 Indicates freewheeling lever in locked position. Specify Quick Code M200 for rigid lever in locked position.

 Indicates function available with BHSS trim.

 Indicates function available with RPB option.

 Indicates function available with VSL trim.

Technical Details

The CLX33900 electrified lock provides remote locking and unlocking, utilizing the CLX3300 Series cylindrical lock. It is ideal for door control where increased security is necessary at all times, while meeting life safety codes.







Featuring EcoFlex®



- Reduces energy consumption up to 92%, as certified by GreenCircle
 - Lower operating costs
 - Assists with load reduction in optimizing energy performance credit in LEED
 - Reduces number of power supplies required
- Field configurable to fail-safe or fail-secure
- Operates from 12-24VDC, offering greater flexibility in system design
- Innovative actuator design provides superior reliability
 - Higher performance and reduced maintenance
 - Ability to have longer cable runs without negatively impacting lock function
 - Reduces risk of voltage drops and eliminates inductive kickback
 - Lower total cost of ownership

| | |
|----------------------------------|---|
| Door Prep | ANSI/SDI A250.14 |
| Door Thickness | 1-3/4" - 2" (44mm - 51mm) Over 2" (51mm) up to 2-1/4" (57mm), specify Quick Code D214 |
| Minimum Stile | 4-1/2" (114mm) |
| Handing | Non-handed |
| Backset | 2-3/4" (70mm) backset w/ 1-1/8" (29mm) front (standard) 3-3/4" (95mm) backset w/ 1-1/8" (29mm) front (specify Quick Code B334) 5" (127mm) backset w/ 1-1/8" (29mm) front (specify Quick Code B500) |
| Latchbolt | Stainless steel, 1/2" (13mm) throw Optional: Brass, 3/4" (19mm) throw deadlocking fire latch for pair of doors (specify Quick Code M16) |
| Front | Wrought brass, bronze, or stainless steel Optional: rounded corners (specify Quick Code M13) 2-1/4" x 1-1/8" (57mm x 29mm) standard for 2-3/4" (70mm), 3-3/4" (95mm) and 5" (127mm) backset 2-1/4" x 1" (57mm x 25mm) standard for 2-3/8" (60mm) backset Accommodates flat doors and doors beveled 1/8" in 2" (3mm in 51mm) |
| Strike | Wrought brass or stainless steel ANSI curved lip standard, 4-7/8" x 1-1/4" x 1-1/4" (124mm x 32mm x 32mm) lip to center Optional strikes, lip lengths and ANSI wrought strike box available; see page 21 |
| Cylinder | Brass, 6-pin L4 keyway, 0-bitted standard, see Quick Codes page 22 |
| Keys | Two nickel silver standard |
| Masterkeying | Can be master keyed or grand master keyed Construction key systems available |
| Voltage | Accommodates 12VDC or 24VDC (Operating range 10.2VDC to 26.4VDC). Lock is polarity sensitive. |
| Electrical Specifications | Fail Safe / Fail Secure Current draw: 10mA @ 12VDC or 24VDC Continuous Peak current draw: 500mA @ 12VDC or 24VDC (Maximum of 2 locks per 1A Power Supply) Monitor switch rating: 500mA Max to 24VDC |
| Electrical Options | Request to Exit switch for monitoring activation of the inside lever (specify Quick Code M92) |
| Operating Temperature | -13°F (-25°C) to 151°F (66°C) |
| Operating Humidity | 5% to 95% relative humidity non condensing |
| ElectroLynx® | Provided with 8-pin molex connector |
| Finishes | See page 24 |
| Warranty | Two-year limited |

FUNCTIONS

| Outside | Inside | Series/Function | Function Description |
|---|---|-----------------|---|
|  |  | CLX33903 | Fail Safe <ul style="list-style-type: none"> • Deadlocking latchbolt by lever either side except when power on locks outside lever • Power off/unlocks outside lever • Inside lever always free • Latchbolt retracted by key when locked electrically |
|  |  | CLX33905 | Fail Secure <ul style="list-style-type: none"> • Deadlocking latchbolt by lever either side except when power off locks outside lever • Power on/unlocks outside lever • Inside lever always free • Latchbolt retracted by key when power is off |



Indicates function available with BHSS trim.

Electrical Accessories

REQUIREMENTS FOR ELECTRICAL AND DATA TRANSFER

To answer the demand for "smart" electronic access control and locking solutions that require fast, easy, and cost-effective installation, ASSA ABLOY Group brands use the ElectroLynx® standardized plug-in connectors and color-coded wiring system.

With *ElectroLynx*, doorway components come pre-wired for easy hookup to the power source. Key to the system is the transfer device hinge that carries power from the frame to the locking hardware.

Features of ElectroLynx:

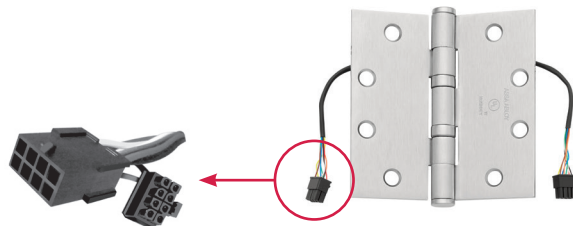
- Makes it easy to bring power to the locking hardware
- Wires have connectors that snap together, like plugging a telephone into a jack

To connect a CLX33900 electrified cylindrical lock to the electronic access control system, the following items are required:

- CLX33900 electrified cylindrical lock
- ASSA ABLOY Door Group pre-wired door, or *ElectroLynx* retrofit cable (order from McKinney)
- Electronic transfer device (*ElectroLynx* electronic transfer hinge or Electrical Power Transfer with standard hinge, from McKinney)
- *ElectroLynx* cable from the hinge to above the ceiling (order from McKinney)

Information regarding cable selection, hinge requirements and order strings can be found in the McKinney Transfer Device Solutions catalog. Consult 800-810-WIRE (9473) with questions on application specifications and requirements.

The McKinney QC8 *ElectroLynx* Hinge is recommended for the CLX33903 function, the CLX33905 function and the M92 (REX) option.



LSP-12-24 POWER SUPPLY

Operation

LifeSafety Power supplies are designed to provide reliable filtered and regulated power for long life to a variety of electrified hardware components.

Features

- Selectable voltage output between 12V and 24V with a single switch
- Internal Back-Up battery charging circuit *
- Regulated and filtered, fuse protected outputs
- Each output can be individually turned on and off via a jumper
- Power status of each output is shown by an LED
- Rugged steel enclosure
- Fire alarm interface included – Dry contacts NO/NC, 9-33VDC, 3-15mA

Electrical Specifications

- Inputs: 120VAC
- Outputs: 12VDC @ 6 Amp or 24VDC @3 Amp – 8 Total Outputs

Listings

- UL294, UL603, UL1076
- ULC S318, ULC S319

Applications

- Fail safe cylindrical locks
- Fail secure cylindrical locks

* Note: Batteries are not included with the power supply

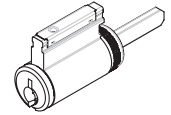
| Model No. | Description |
|-----------|--------------------------------------|
| LSP-12-24 | 12V – 6AMP / 24V – 3AMP Power Supply |



Cylinders

FIXED CORE

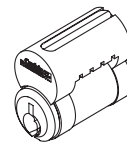
| Description | Pins | Door Thickness | Model Number Used with CLX3300 Mechanical Functions | Model Number Used with CLX33900 Electrified Functions |
|---------------------------------------|------|-----------------|---|---|
| Conventional | 6 | 1-3/8" - 2" | CR2000-034 (Std.) | CR2000-E34 (Std.) |
| | | 2-1/4" | CR2000-034L | CR2000-E34L |
| | 7 | 1-3/8" - 2" | CR2000-034-7 | CR2000-E34-7 |
| | | 2-1/4" | CR2000-034L-7 | CR2000-E34L-7 |
| Hotel | 6 | 1-3/8" - 2-1/4" | CR2001-034A | N/A |
| | 7 | | CR2001-034A-7 | |
| Security | 6 | 1-3/8" - 2" | CR2010-034 | CR2010-E34 |
| | | 2-1/4" | CR2010-034L | CR2010-E34L |
| Pyramid - Security | 7 | 1-3/8" - 2" | CR2027-034 | CR2027-E34 |
| | | 2-1/4" | CR2027-034L | CR2027-E34L |
| Pyramid - High Security | 7 | 1-3/8" - 2" | CR2020-034 | CR2020-E34 |
| | | 2-1/4" | CR2020-034L | CR2020-E34L |
| Access 3® - Patented (AP) | 6 | 1-3/8" - 2" | CR2500-034 | CR2500-E34 |
| | | 2-1/4" | CR2500-034L | CR2500-E34L |
| Access 3® - Patented Hotel (AP) | 6 | 1-3/8" - 2-1/4" | CR2501-034A | N/A |
| Access 3® - Security (AS) | 6 | 1-3/8" - 2" | CR2600-034 | CR2600-E34 |
| | | 2-1/4" | CR2600-034L | CR2600-E34L |
| Access 3® - Security Hotel (AS) | 6 | 1-3/8" - 2-1/4" | CR2601-034A | N/A |
| Access 3® - High Security (AHS) | 6 | 1-3/8" - 2" | CR2700-034 | CR2700-E34 |
| | | 2-1/4" | CR2700-034L | CR2700-E34L |
| Access 3® - High Security Hotel (AHS) | 6 | 1-3/8" - 2-1/4" | CR2701-034A | N/A |



- Plug diameter for conventional cylinders is .509, .510 for Access 3®, .552 for security cylinders and .496 for Pyramid cylinders.
- Cylinders are brass and come with 2 nickel silver keys.
- Finishes: 606, 626 or BSP.
- To order cylinders separately, specify Model No. x Keyway x Finish (e.g., CR2000-034 x L4 x 626). Refer to CLX3300 Series Parts Manual for tailpiece information.

LARGE FORMAT INTERCHANGEABLE CORE

| Description | Pins | Model Number Used with All Functions |
|---------------------------------------|------|--------------------------------------|
| Conventional | 6 | CR8000 |
| | 7 | CR8000-7 |
| Hotel | 6 | CR8001-034A |
| | 7 | CR8001-034A-7 |
| Security | 6 | CR8010 |
| Pyramid - Security | 7 | CR8020 |
| Pyramid - High Security | 7 | CR8027 |
| Access 3® - Patented (AP) | 6 | CR8500 |
| Access 3® - Security (AS) | 6 | CR8600 |
| Access 3® - High Security (AHS) | 6 | CR8700 |
| Access 3® - Hotel Patented (AP) | 6 | N/A |
| Access 3® - Hotel Security (AS) | 6 | N/A |
| Access 3® - Hotel High Security (AHS) | 6 | N/A |

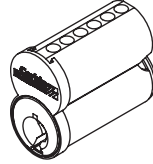


- Plug diameter for conventional cores is .509, .510 for Access 3®, .552 for security cylinders and .496 for Pyramid cylinders.
- Cores are brass and come with 2 nickel silver keys.
- Finishes: 606, 626 or BSP.
- To order cores separately, specify Model No. x Keyway x Finish (e.g., CR8000 x L4 x 626). Refer to CLX3300 Series Parts Manual for tailpiece information.

Cylinders

SMALL FORMAT INTERCHANGEABLE CORE

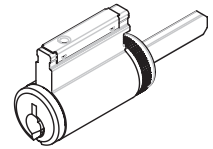
| Description | Model Number Used with All Functions |
|-------------|---|
| 6-pin | CR8200 |
| 7-pin | CR8200-7 |



- Cores are available in Best® keyways A, B, C, D, E, F, G, H, J, K, L, M.
- Cores are brass and come with 2 nickel silver keys.
- Finishes: 606, 626

CYLINDERS WITH COMPETITIVE KEYWAYS

| Description | Pins | Door Thickness | Model Number Used with CLX3300 Mechanical Functions | Model Number Used with CLX33900 Electrified Functions |
|---------------------------|------|----------------|---|---|
| Schlage® C (0-bitted) | 6 | 1-3/8" - 2" | CR2400-034-C | CR2400-E34-C |
| | | 2-1/4" | CR2400-034L-C | CR2400-E34L-C |
| Schlage® C (keyed random) | 6 | 1-3/8" - 2" | CR2400-034-C-KR | CR2400-E34-C-KR |
| | | 2-1/4" | CR2400-034L-C-KR | CR2400-E34L-C-KR |
| SARGENT® LA (0-bitted) | 6 | 1-3/8" - 2" | CR2400-034-LA | CR2400-E34-LA |
| | | 2-1/4" | CR2400-034L-LA | CR2400-E34L-LA |



Finishes: 606, 626

Cylinders

LEVERS THAT ACCEPT COMPETITIVE INTERCHANGEABLE CORE CYLINDERS*

| Cylinder Type | Quick Code |
|--|----------------------------|
| SFIC 6 or 7-pin (all designs) | M08 Tailpiece included |
| Schlage® 6-pin LFIC (AZ, NZ, PZ, BHSS, NVSL only) | M69 Tailpiece included |
| ASSA ABLOY ACCENTRA® 6-pin LFIC 1210, 5210, K800-6 (AZ, NZ, PZ, NVSL only) | YRC Tailpiece included |
| ASSA ABLOY ACCENTRA® 7-pin LFIC 1220, 5220, K800-7 (AZ, NZ, PZ, NVSL only) | YRC7 Tailpiece included |
| Medeco 32 Series 6-pin LFIC (AZ, NZ, PZ, NVSL only) | MRC Tailpiece included |

*Core not included.
Refer to CLX3300 Series Parts Manual for tailpiece information.

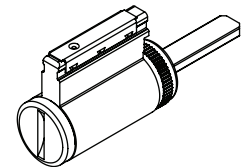
ADAPTERS REQUIRED TO ACCEPT COMPETITIVE CYLINDERS*

| Competitive Cylinder | Quick Code |
|---|---|
| Schlage® 6-pin fixed core Conventional (21-002, 23-001, 23-013) or Primus® (20-548, 20-550, 20-748, 20-750) | M06 Tailpiece included |
| SARGENT® 6-pin fixed core C10X-1 | M09 Tailpiece and special lever included |
| ASSA ABLOY ACCENTRA® 6-pin fixed core 1803, 5803, K403 | YC Tailpiece included |
| ASSA ABLOY ACCENTRA® 7-pin fixed core 1803A, 5803A, K403A | YC7 Tailpiece included |

*Cylinder not included.
Refer to CLX3300 Series Parts Manual for tailpiece information.

MISCELLANEOUS

| Description | Door Thickness | Model Number Used with CLX3330 Function Only |
|----------------------------|----------------|--|
| Emergency release cylinder | 1-3/8" - 2" | CR2000C-034 |
| | 2-1/4" | CR2000C-034L |

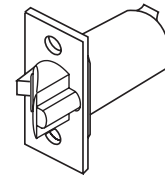
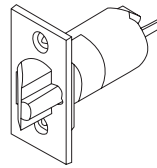
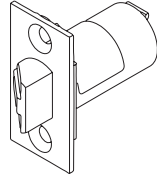


Latches

LATCHES

To order optional latch with lockset, see Backset Quick Codes, page 22.

To order latch separately, specify Part No. x Finish (e.g., 867F20 x 626).



| Backset and Front Description | Plain For CLX3310, CLX3320, CLX3320H, CLX3320TO | Deadlocking For All Other Mechanical Functions | Deadlocking For All Electrified Functions | 3/4" (19mm) Throw Deadlocking Fire Latch for Pair of Doors |
|--|---|--|---|--|
| 2-3/4" (70mm) Backset | | | | |
| Square corner front, 2-1/4" (57mm) x 1-1/8" (29mm) (standard) | 867F20 | 867F21 | 867F32 | 601F69 605, 606 and 626 finishes available |
| Rounded corner front, 2-1/4" (57mm) x 1-1/8" (29mm) | 867F26 | 867F27 | 867F35 | Not available |
| 2-3/8" (60mm) Backset | | | | |
| Square corner front, 2-1/4" (57mm) x 1" (25mm) (standard with B238 option) | 897F60* | 897F61* | 899F42* | Not available |
| Rounded corner front, 2-1/4" (57mm) x 1" (25mm) | 897F64* | 897F65* | 899F44* | Not available |
| Square corner front, 2-1/4" (57mm) x 1-1/8" (29mm) | 897F58* | 897F59* | 899F41* | Not available |
| Rounded corner front, 2-1/4" (57mm) x 1-1/8" (29mm) | 897F62* | 897F63* | 899F43* | Not available |
| 3-3/4" (95mm) Backset | | | | |
| Square corner front, 2-1/4" (57mm) x 1-1/8" (29mm) | 867F22 | 867F23 | 867F33 | Not available |
| Rounded corner front, 2-1/4" (57mm) x 1-1/8" (29mm) | 867F28 | 867F29 | 867F36 | Not available |
| 5" (127mm) Backset | | | | |
| Square corner front, 2-1/4" (57mm) x 1-1/8" (29mm) | 867F24 | 867F25 | 867F34 | Not available |
| Rounded corner front, 2-1/4" (57mm) x 1-1/8" (29mm) | 867F30 | 867F31 | 867F37 | Not available |

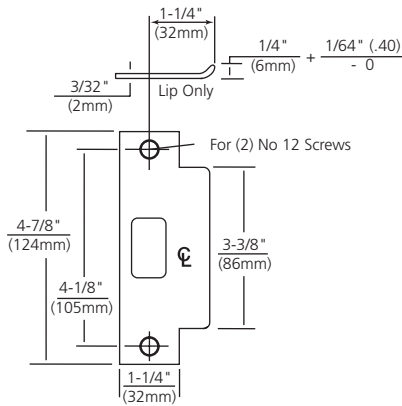
*These latchbolts are only compatible with 2-3/8" lockbodies shipped after October 1, 2024. For 2-3/8" latches used with lockbodies shipped prior to October 1, 2024, contact Technical Product Support.

Strikes

STRIKES

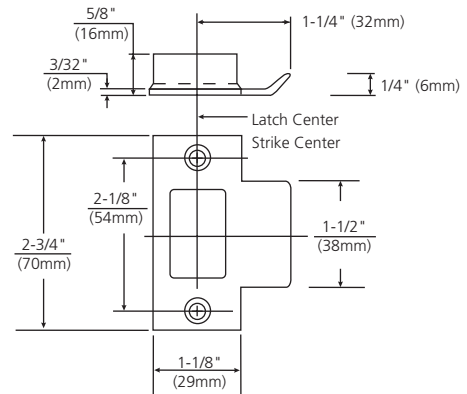
ANSI Curved Lip (standard)

- Brass or stainless steel.
- 4-7/8" (124mm) x 1-1/4" (32mm) x 1-1/4" (32mm) lip to center.
- Optional lip lengths:
1" (25mm), 1-1/8" (29mm), 1-3/8" (35mm), 1-1/2" (38mm), 1-3/4" (44mm), 2" (51mm), 2-1/4" (57mm), 2-1/2" (64mm), 2-3/4" (70mm), 3" (76mm).
- To order with lockset, see Quick Codes below.
- To order separately, specify 217L13 x Lip Length x Finish.



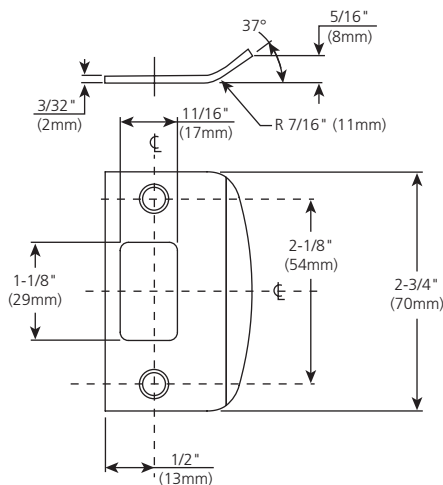
Curved Lip "T" Strike

- Brass.
- 2-3/4" (70mm) x 1-1/8" (29mm) x 1-1/4" (32mm) lip to center.
- Optional lip lengths: 1" (25mm), 1-1/8" (29mm), 1-3/8" (35mm), 1-1/2" (38mm), 1-3/4" (44mm), 2" (51mm), 2-1/4" (57mm), 2-1/2" (64mm), 2-3/4" (70mm), 3" (76mm).
- To order with lockset, see Quick Codes below.
- To order separately, specify 586L19 x Lip Length x Finish.



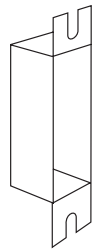
Full Lip Strike

- Brass.
- 2- 3/4" (70mm) x full lip x 1-1/8" (29mm) lip to center.
- No optional lip lengths.
- To order with lockset, see Quick Codes below.
- To order separately, specify 607F76.



ANSI Wrought Strike Box

- Used with ANSI 4-7/8" (124mm) strike .
- To order with lockset, specify Quick Code M17.
- To order separately, specify 120F768.



STRIKES

| ANSI Lip to Center | ANSI Curved Lip Specify | T-Strike Curved Lip Box Specify | Full Lip Specify |
|--------------------|-------------------------|---------------------------------|------------------|
| 1" (25mm) | SA100 | SC100 | |
| 1-1/8" (29mm) | SA118 | SC118 | SF118 |
| 1-1/4" (32mm) | SA114 (standard) | SC114 | |
| 1-3/8" (35mm) | SA138 | SC138 | |
| 1-1/2" (38mm) | SA112 | SC112 | |
| 1-3/4" (44mm) | SA134 | SC134 | |
| 2" (51mm) | SA200 | SC200 | |
| 2-1/4" (57mm) | SA214 | SC214 | |
| 2-1/2" (64mm) | SA212 | SC212 | |
| 2-3/4" (70mm) | SA234 | SC234 | |
| 3" (76mm) | SA300 | SC300 | |

Quick Codes

CYLINDER AND KEYING

| Description | Specify |
|--|------------|
| Conventional 6-pin | (standard) |
| Conventional 7-pin | 7P |
| Less Cylinder(s) | LC |
| LFIC | |
| LFIC 6-pin | C6 |
| LFIC 6-pin Less Core | CL6 |
| LFIC 6-Pin Disposable Core ¹ | CT6D |
| LFIC 6-pin with Temporary Construction Core (Red) ¹ | CT6R |
| LFIC 6-pin with Temporary Construction Core (Blue) ¹ | CT6B |
| LFIC 6-pin with Temporary Construction Core (Green) ¹ | CT6G |
| LFIC 7-pin | C7 |
| LFIC 7-pin Less Core | CL7 |
| LFIC 7-Pin Disposable Core ¹ | CT7D |
| LFIC 7-pin with Temporary Construction Core (Red) ¹ | CT7R |
| LFIC 7-pin with Temporary Construction Core (Blue) ¹ | CT7B |
| LFIC 7-pin with Temporary Construction Core (Green) ¹ | CT7G |
| SFIC (all lever designs)¹ | |
| SFIC 6-pin | C6S |
| SFIC 6- or 7-pin Disposable Core | CTSD |
| SFIC 6-pin with Temporary Construction Core (Blue) | CT6SB |
| SFIC 7-pin | C7S |
| SFIC 7-pin with Temporary Construction Core (Blue) | CT7SB |
| Security | |
| Security ¹ | HS |
| Security LFIC ¹ | CHS |
| Access 3[®] | |
| Access 3 Patented Fixed Core | AP |
| Access 3 Security Fixed Core | AS |
| Access 3 High Security Fixed Core | AHS |
| Access 3 Patented LFIC ¹ | ACP |
| Access 3 Security LFIC ¹ | ACS |
| Access 3 High Security LFIC ¹ | ACHS |

DOOR THICKNESS

| Door Thickness | Specify |
|---|------------|
| 1-3/4" - 2" (44mm - 51mm) | (standard) |
| 1-3/8" (35mm) Adapter plates ^{2,3} | D138 |
| 2" (51mm) VSL trim only ⁴ | D200 |
| Over 2" - 2-1/4" (51mm - 57mm) ^{3,4} | D214 |

- Lock provided with adapter (spacer) plates. Supplied with 2-3/8" backset latch with 1" front unless B234 specified.
- Not available with BHSS trim
- Refer to page 8 for VSL door thickness range.

| Description | Specify |
|---|--------------------|
| Pyramid | |
| Pyramid Security Fixed Core ¹ | PS |
| Pyramid High Security Fixed Core ¹ | PHS |
| Pyramid Security LFIC ¹ | PCS |
| Pyramid High Security LFIC ¹ | PCHS |
| Pyramid LFIC Less Core ¹ | CLP |
| Pyramid with Temporary Construction Core ¹ | CTP |
| Pyramid Disposable Core ¹ | CTPD |
| Keying and Keys | |
| 0-bitted with 2 blank keys | (standard) |
| Keyed Random | KR |
| Construction Master Keyed | CMK |
| 2 keys per lock | (standard) |
| More than 2 keys | KY# (e.g., KY6) |
| Visual Key Control (VKC) | |
| No bitting or keyset stamping on keys | VKC0 |
| Keys only | VKC1 |
| Cylinders and keys (not for AS, AHS, ACS, ACHS, HS, CHS, PHS or PCHS) | VKC2 |
| Cylinders only (not for AS, AHS, HS, ACS, ACHS, CHS, PHS or PCHS) | VKC3 |
| Concealed Key Control (CKC) | |
| CKC cylinders with VKC keys | CKC2 |
| CKC cylinders only (not for AS, AHS, ACS, ACHS, PHS, PCHS) | CKC3 |
| Schlage [®] C keyway cylinder (0-Bitted or KR) ¹ | C |
| SARGENT [®] LA keyway cylinder (0-Bitted) ¹ | LA |

1. Not available in CLX3329 function

BACKSET

| Description | Specify |
|----------------------------|-----------------|
| 2-3/4" (70mm) | B234 (standard) |
| 2-3/8" (60mm) ³ | B238 |
| 3-3/4" (95mm) | B334 |
| 5" (127mm) | B500 |

Quick Codes

VISUAL STATUS INDICATOR OPTIONS

| Description | Specify |
|---|---------|
| Push/Turn button provided with red powder coat finish (see page 10 for available functions) | RPB |
| Indicator Outside Only with Icons - Green/Red | V30 |
| Indicator Outside Only with Icons - White/Red | V60 |
| Indicator Inside Only with Icons - Green/Red | V03 |
| Indicator Inside Only with Icons - White/Red | V06 |
| Indicator Both Sides with Icons - Green/Red | V33 |
| Indicator Both Sides with Icons - White/Red | V66 |
| Indicator Both Sides without Icons - Green/Red (CLX3349 only) | V77 |
| Indicator Both Sides without Icons - White/Red (CLX3349 only) | V88 |

MISCELLANEOUS OPTIONS

| Description | Specify |
|--|------------------|
| Spanner head screws | M02 |
| Torx® head screws | M04 |
| Less cylinder, with tailpiece for Schlage® 6-pin fixed core cylinder (all designs) | M06 |
| Lever to accept 6 or 7-pin SFIC (all designs) | M08 |
| Lever to accept SARGENT® 6-pin fixed core cylinder (all designs) | M09 |
| Rounded corners on latch front | M13 |
| 1" latch front, rounded corners (2-3/8" backset only) ¹ | M15 |
| 3/4" (19mm) throw fire latch ¹ | M16 |
| ANSI wrought strike box | M17 |
| Knurling outside and inside (AZ, NZ, PZ only) | M20 ² |
| Knurling outside only (AZ, NZ, PZ only) | M21 ² |
| Knurling inside only (AZ, NZ, PZ only) | M22 ² |
| Abrasive coat outside and inside (AZ, NZ, PZ only) | M23 |
| Abrasive coat inside only (AZ, NZ, PZ only) | M24 |
| Abrasive coat outside only (AZ, NZ, PZ only) | M25 |
| Lead lining | M28 |
| 1-1/8" front, square corners (2-3/8" backset only) ¹ | M32 |
| Request to Exit (REX) Switch (Available with CLX33900 and all mechanical functions except dummy) | M92 |
| Lever to accept Schlage® LFIC (AZ, NZ, PZ, BHSS, NVSL only) | M69 |
| Rigid outside lever when locked (all functions except CLX3349) | M200 |
| Less cylinder, with tailpiece for ASSA ABLOY ACCENTRA® 6-pin fixed core cylinder (all designs) | YC |
| Less cylinder, with tailpiece for ASSA ABLOY ACCENTRA® 7-pin fixed core cylinder (all designs) | YC7 |
| Lever to accept ASSA ABLOY ACCENTRA® 6-pin LFIC (AZ, NZ, PZ, NVSL only) | YRC |
| Lever to accept ASSA ABLOY ACCENTRA® 7-pin LFIC (AZ, NZ, PZ, NVSL only) | YRC7 |
| Lever to accept Medeco 32 Series 6-pin LFIC (AZ, NZ, PZ, NVSL only) | MRC |

¹ Not available with BHSS trim

² All levers provided in a powder coat finish will be supplied with an abrasive coating

Finishes

FINISHES

| Description | | Specify |
|-----------------------|---|---------|
| ANSI/BHMA 605 (US3) | Bright Brass | 605 |
| ANSI/BHMA 606 (US4) | Satin Brass | 606 |
| ANSI/BHMA 611 (US9) | Bright Bronze | 611 |
| ANSI/BHMA 612 (US10) | Satin Bronze | 612 |
| ANSI/BHMA 613 (US10B) | Dark Oxidized Satin Bronze, Oil Rubbed | 613 |
| 613E | Dark Oxidized Satin Bronze - equivalent | 613E |
| 613L | Dark Oxidized Satin Bronze, Clear Coated | 613L |
| ANSI/BHMA 618 (US14) | Bright Nickel Plated | 618 |
| ANSI/BHMA 619 (US15) | Satin Nickel Plated | 619 |
| 619C | Satin Nickel Plated with MicroShield® | 619C |
| ANSI/BHMA 625 (US26) | Bright Chromium Plated | 625 |
| ANSI/BHMA 626 (US26D) | Satin Chromium Plated | 626 |
| 626C | Satin Chromium Plated with MicroShield® | 626C |
| ANSI/BHMA 630 (US32D) | Satin Stainless Steel (BHSS only) | 630 |
| 630C | Satin Stainless Steel with MicroShield® (BHSS only) | 630C |
| 722 | Black Oxidized Bronze, Oil Rubbed | 722 |
| BSP | Black Suede Powder Coat | BSP |
| WSP | White Suede Powder Coat | WSP |

Zinc levers are plated to match ANSI/BHMA finish.

LOCK/CYLINDER FINISH

| Lock | Cylinder/Core* |
|--|----------------|
| 605, 606, 611, 612, 613, 613E, 613L, 722 | 606 |
| 618, 619, 625, 626, 630, WSP | 626 |
| BSP | BSP |

*Finish when cylinder provided with lock.

626 finish provided for cylinders/cores where BSP not available, see cylinder pages 17-18 for finish availability.

How to Order

ORDERING EXAMPLES

Stock Order

| Quantity | Series/Function | Trim Lever/Rose | Finish | Hand |
|----------|-----------------|--------------------|--------|------|
| 100 | CLX3355 | NZD | 626 | RHR |

Split Trim / Finish Order

| Quantity | Series/ Function | Trim Lever/Rose | | Finish | | Hand |
|----------|---------------------|--------------------|--------|---------|--------|------|
| | | Outside | Inside | Outside | Inside | |
| 12 | CLX3355 | NZD | AZD | 626 | 625 | LH |

Contract / Detailed Order

| Quantity | Series/ Function | Trim Lever/Rose | Finish | Hand | Door Thickness | Backset | Optional Strike | Misc. Options | Optional Cylinder | Keying | Keyset |
|----------|---------------------|--------------------|--------|------|-------------------|---------|--------------------|------------------|----------------------|--------|--------|
| 24 | CLX3355 | NZD | 626 | RHR | D214 | B334 | SC114 | M04-M16 | C6 | VKC3 | AA1 |

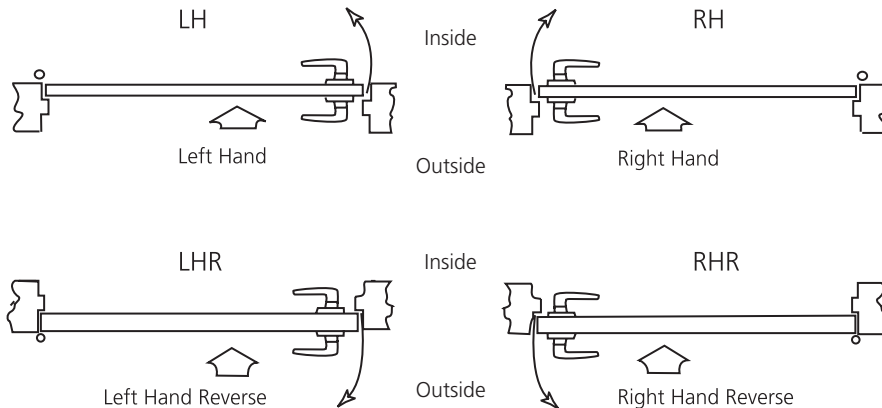
CLX33900 Electrified Series

| Quantity | Series/Function | Trim Lever/Rose | Finish | Hand |
|----------|-----------------|--------------------|--------|------|
| 6 | CLX33903 | AZD | 626 | RH |

For Behavioral Health trim, see page 7
For Indicator trim, see page 8

HOW TO SPECIFY HANDING

Door hands determined from outside (secure side) of door.



How to Specify

CLX3300 SERIES SUGGESTED SPECIFICATION

- A. Locks shall be CLX3300 Series cylindrical lever locks as manufactured by Corbin Russwin, Berlin, CT.
- B. Locks shall be ANSI/BHMA Certified Products Directory (CPD) listed.
 - 1. A156.2, Series 4000, Grade 1
 - 2. A156.41
- C. Locks shall exceed the requirements of ANSI/BHMA A156.2 Series 4000, Grade 1 with all standard trims, as follows:
 - 1. Cycle Test: Exceeds ANSI/BHMA A156.2 Grade 1 requirements with no lever sag. Verified by UL for Operational Cycling (V875753) at 20 Million Cycles.
 - 2. Abusive Locked Lever Torque: Exceeds 3,100 in-lb with no entry while maintaining egress (2.6 times ANSI/BHMA A156.2 requirements)
 - 3. Offset Lever Pull: Exceeds 1,600 lbs with no entry (8 times ANSI/BHMA A156.2 requirements)
 - 4. Latch Retraction with Preload: Exceeds 100lb preload while maintaining ANSI/BHMA requirements for operation in warped doors (2 times ANSI/BHMA A156.2 requirements)
 - 5. Vertical Impact: Exceeds 100 vertical impacts (20 times ANSI/BHMA A156.2 requirements)
- D. Locks shall comply with UL 10C positive pressure requirements.
- E. Locks required for fire doors shall be listed by Underwriters Laboratories for ratings of 3 hours (A label) and less, for doors up to 4'0" (1.2m) x 10'0" (3.0m) and pairs of doors 8'0" (2.4m) x 10'0" (3.0m)
- F. Locks shall have a push/turn button adjustable for door thickness without disassembly.
- G. Locks shall have a chassis design that supports all cylinder formats allowing flexibility for changing from fixed core to interchangeable core cylinders.
- H. Locks shall be non-handed with bi-directional lever operation.
- I. Lock levers shall be made of solid material.
- J. Lock shall be available in a minimum of seven different lever designs.
- K. Locks shall have a 2-3/4" (70mm) standard backset.
- L. Strikes shall be non-handed with a curved lip. Provide wrought boxes with strikes.
- M. Locks shall have brass 6-pin cylinder standard.
 - 1. Provide two nickel silver keys with each lock.
- N. Locks shall have approximately 45 degrees of lever rotation in order to fully retract latch.
- O. Locks shall have a ten-year limited warranty.

How to Specify

CLX3300 SERIES WITH BHSS TRIM SUGGESTED SPECIFICATION

- A. Locks shall be CLX3300 Series cylindrical lever locks as manufactured by Corbin Russwin, Berlin, CT.
- B. Locks shall be listed for low, medium and high risk areas in the New York State Office of Mental Health (NYS-OMH) Patient Safety Standard.
- C. Locks shall be ANSI/BHMA Certified Products Directory (CPD) listed.
 - 1. A156.2, Series 4000, Grade 1
 - 2. A156.41
- D. Locks shall exceed the requirements of ANSI/BHMA A156.2 Series 4000, Grade 1 with all standard trims.
- E. Locks shall comply with UL 10C positive pressure requirements.
- F. Locks required for fire doors shall be listed by Underwriters Laboratories for ratings of 3 hours (A label) and less, for doors up to 4'0" (1.2m) x 10'0" (3.0m) and pairs of doors 8'0" (2.4m) x 10'0" (3.0m)
- G. Locks shall have a chassis design that supports all cylinder formats allowing flexibility for changing from fixed core to interchangeable core cylinders.
- H. Lock lever and escutcheon shall be made of solid stainless steel material.
- I. Locks shall have a 2-3/4" (70mm) standard backset.
- J. Strikes shall be non-handed with a curved lip. Provide wrought boxes with strikes.
- K. Locks shall be available with lead-lining and antimicrobial coating.
- L. Exposed fasteners shall be provided as Torx® security pin standard.
- M. Locks shall have brass 6-pin cylinder standard.
 - 1. Provide two nickel silver keys with each lock.
- N. Electrified functions shall be provided with EcoFlex® Technology.
- O. Locks shall have a ten-year limited warranty on mechanical components and a two-year limited warranty on electric components.

How to Specify

CLX3300 SERIES WITH VSL TRIM SUGGESTED SPECIFICATION

- A. Locks shall be CLX3300 Series cylindrical lever locks as manufactured by Corbin Russwin, Berlin, CT.
- B. Locks shall be ANSI/BHMA Certified Products Directory (CPD) listed.
 - 1. A156.2, Series 4000, Grade 1
 - 2. A156.41
- C. Locks shall exceed the requirements of ANSI/BHMA A156.2 Series 4000, Grade 1.
- D. Locks shall comply with UL 10C positive pressure requirements.
- E. Locks required for fire doors shall be listed by Underwriters Laboratories for ratings of 3 hours (A label) and less, for doors up to 4'0" (1.2m) x 10'0" (3.0m) and pairs of doors 8'0" (2.4m) x 10'0" (3.0m)
- F. Locks shall have a chassis design that supports all cylinder formats allowing flexibility for changing from fixed core to interchangeable core cylinders.
- G. Lock levers shall be made of solid material.
- H. Locks shall have indicator trim which visually displays the lock status of the door.
- I. Visual status indicators shall consist of six (6) individual windows for viewing at all angles.
- J. Visual status trim shall be non-handed and able to install easily on doors with any handing.
- K. Visual status indicators shall be available for the outside only, inside only or both sides of the door.
- L. Visual status indicators shall be available with a variety of non-keyed and keyed functions.
- M. Locks shall have a 2-3/4" (70mm) standard backset.
- N. Strikes shall be non-handed with a curved lip. Provide wrought boxes with strikes.
- O. Locks shall be available with lead-lining and antimicrobial coating.
- P. Locks shall have brass 6-pin cylinder standard.
 - 1. Provide two nickel silver keys with each lock.
- Q. Locks shall have a ten-year limited warranty on mechanical components.

How to Specify

CLX33900 WITH ECOFLEX® TECHNOLOGY SUGGESTED SPECIFICATION

- A. Locks shall be CLX33900 cylindrical lever locks as manufactured by Corbin Russwin, Berlin, CT.
- B. Locks shall be ANSI/BHMA Certified Products Directory (CPD) listed.
 - 1. A156.2, Series 4000, Grade 1
 - 2. A156.41
- C. Locks shall exceed the requirements of ANSI/BHMA A156.2 Series 4000, Grade 1 with all standard trim.
- D. Locks shall comply with UL 10C positive pressure requirements.
- E. Locks required for fire doors shall be listed by Underwriters Laboratories for ratings of 3 hours (A label) and less, for doors up to 4'0" (1.2m) x 10'0" (3.0m) and pairs of doors 8'0" (2.4m) x 10'0" (3.0m)
- F. Locks shall be field configurable Fail Safe / Fail Secure by means of a dip switch setting.
- G. Locks shall have an operating voltage range from 10.2VDC to 26.4VDC.
- H. Locks shall have a continuous current draw of 10mA at 12VDC or 24VDC
- I. Locks shall have a chassis design that supports all cylinder formats allowing flexibility for changing from fixed core to interchangeable core cylinders.
- J. Locks shall be non-handed with bi-directional lever operation.
- K. Lock levers shall be made of solid material.
- L. Lock shall be available in a minimum of seven different lever designs.
- M. Locks shall have a 2-3/4" (70mm) standard backset.
- N. Strikes shall be non-handed with a curved lip. Provide wrought boxes with strikes.
- O. Locks shall have brass 6-pin cylinder standard.
 - 1. Provide two nickel silver keys with each lock.
- P. Locks shall have approximately 45 degrees of lever rotation in order to fully retract latch.
- Q. Locks shall have a two-year limited warranty on electric components.

The ASSA ABLOY Group is the global leader in access solutions. Every day, we help billions of people experience a more open world.

ASSA ABLOY Opening Solutions leads the development within door openings and products for access solutions in homes, businesses and institutions. Our offering includes doors, frames, door and window hardware, locks, perimeter fencing, access control and service.



For additional information, contact your
ASSA ABLOY Door Security Solutions
sales consultant or
visit www.corbinruswin.com.

In U.S.

Corbin Russwin
Architectural Hardware
225 Episcopal Road
Berlin, CT 06037
Phone: 800-543-3658
Fax: 800-447-6714
www.corbinruswin.com

In Canada

ASSA ABLOY Door
Security Solutions Canada
160 Four Valley Drive
Vaughan, Ontario
Canada L4K 4T9
Phone: 800-461-3007
Fax: 800-461-8989
www.assaabloydss.ca

ASSA ABLOY Group companies offer MicroShield®, an antimicrobial coating for door hardware. MicroShield uses proven silver ion-based technology from Agion®, a leading provider of antimicrobial solutions, to stem the spread of bacteria and other microbes.

MicroShield® is a trademark of ASSA ABLOY Access and Egress Hardware Group, Inc.



The Agion antimicrobial is not intended as a substitute for good hygiene. Coated products must still be cleaned to ensure the surfaces will be free of destructive microbes. ASSA ABLOY makes no representations or warranties, express or implied, as to the efficacy of the Agion antimicrobial. A copy of the Agion warranty is available upon request. Agion is a registered trademark of Agion Technologies, Inc., Wakefield, MA, USA.