

80 series  
Parts List

8300  
8400  
8500

Parts List

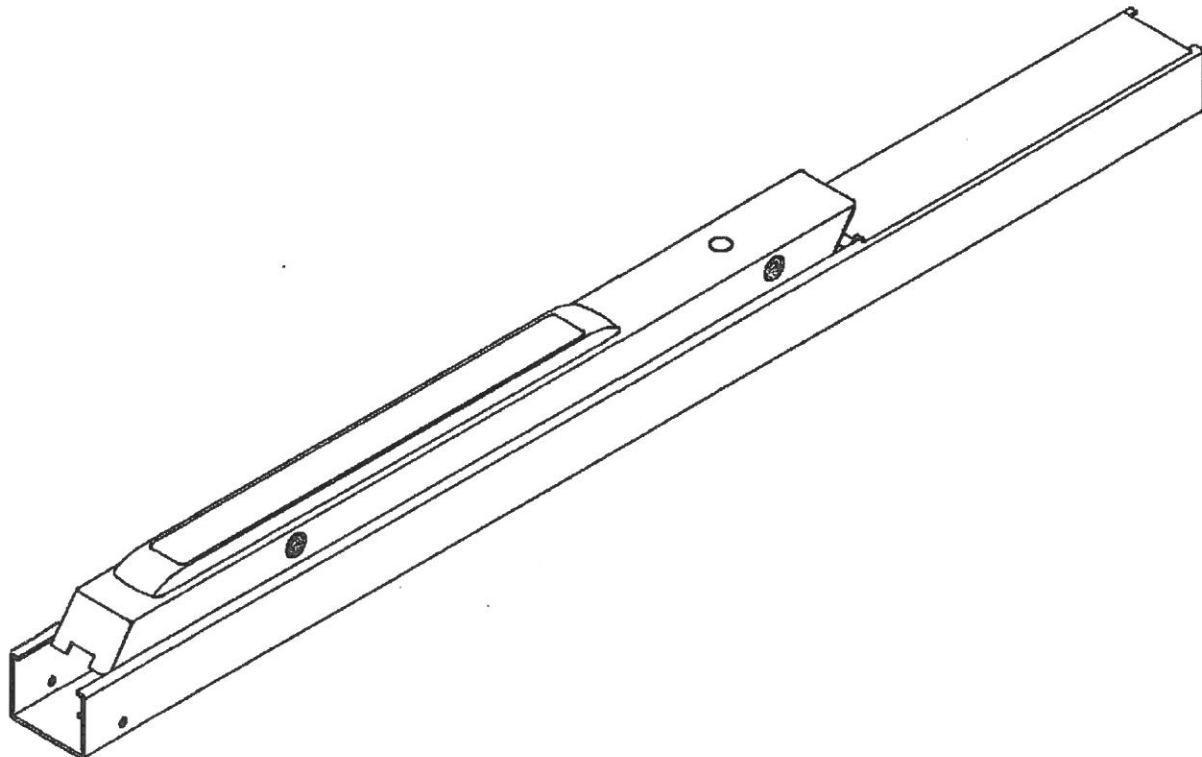
Page No 80.1  
Rev C  
8/18/2003

RAIL ASSEMBLY LESS END CAP AND MOUNTING BRACKET

SIZE	DOOR WIDTH	PIVOT DISTANCE	CAM LOCKDOWN (NO PREFIX)	CYLINDER LOCKDOWN (16 PREFIX) *	FIRE EXIT HARDWARE (12 PREFIX)
			STANDARD RAIL (WITH TOUCH PAD)		
E	24" TO 32"	8.5"	68-2716	68-2720	68-2724
F	33" TO 36"	11.25"	68-2717	68-2721	68-2725
J	37" TO 42"	14"	68-2719	68-2723	68-2727
G	43" TO 48"	20.5"	68-2718	68-2722	68-2726
19- RAIL (NO TOUCH PAD)					
E	24" TO 32"	8.5"	68-2905	68-2909	68-2913
F	33" TO 36"	11.25"	68-2906	68-2910	68-2914
J	37" TO 42"	14"	68-2908	68-2912	68-2916
G	43" TO 48"	20.5"	68-2907	68-2911	68-2915

\* FOR CYLINDER LOCKDOWN ADD 2" TO MIN DOOR SIZE STATED ON E SIZE .

NOTE: TO DETERMINE RAIL SIZE MEASURE DISTANCE BETWEEN PIVOT CENTERS.



80 series  
Parts List

MD/WD8600  
PP/PR/SP8600  
PP/PR/SP/NB8700  
8700 8800 8900

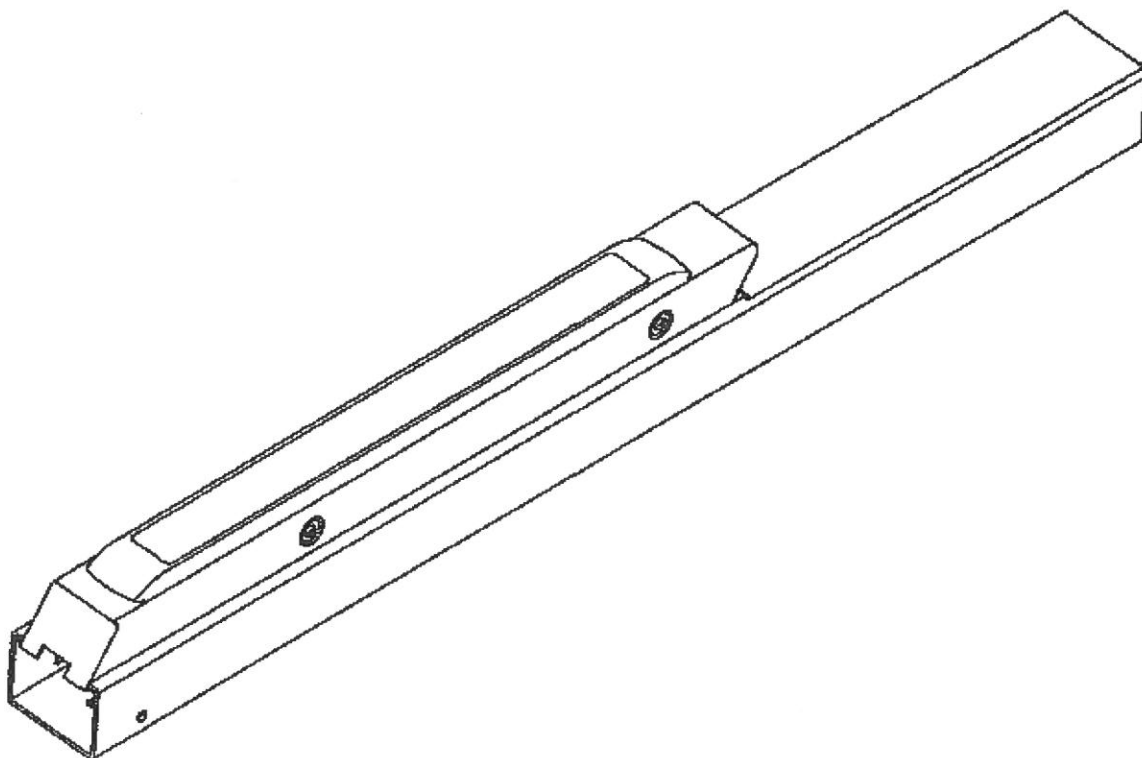
Parts List

Page No Rev  
80.2 C  
8/18/2003

RAIL ASSEMBLY LESS END CAP AND MOUNTING BRACKET

SIZE	DOOR WIDTH	PIVOT DISTANCE	CAM LOCKDOWN (NO PREFIX)	CYLINDER LOCKDOWN (16 PREFIX) *	FIRE EXIT HARDWARE (12 PREFIX)
			STANDARD RAILS (WITH TOUCH PAD)		
E	24" TO 32"	8.5"	68-2694	68-2698	68-2702
F	33" TO 36"	11.25"	68-2695	68-2699	68-2703
J	37" TO 42"	14"	68-2697	68-2701	68-2705
G	43" TO 48"	20.5"	68-2696	68-2700	68-2704
19- (NO TOUCH PAD) RAILS					
E	24" TO 32"	8.5"	68-2918	68-2922	68-2926
F	33" TO 38"	11.25"	68-2919	68-2923	68-2927
J	37" TO 42"	14"	68-2921	68-2925	68-2929
G	43" TO 48"	20.5"	68-2920	68-2924	68-2928

\*FOR CYLINDER LOCKDOWN ADD 2" TO MIN DOOR SIZE STATED ON E SIZE .  
NOTE: TO DETERMINE RAIL SIZE MEASURE DISTANCE BETWEEN PIVOT CENTERS.



# 80 series Parts List

## RAIL ASSEMBLY STANDARD COMPONENTS

### Parts List

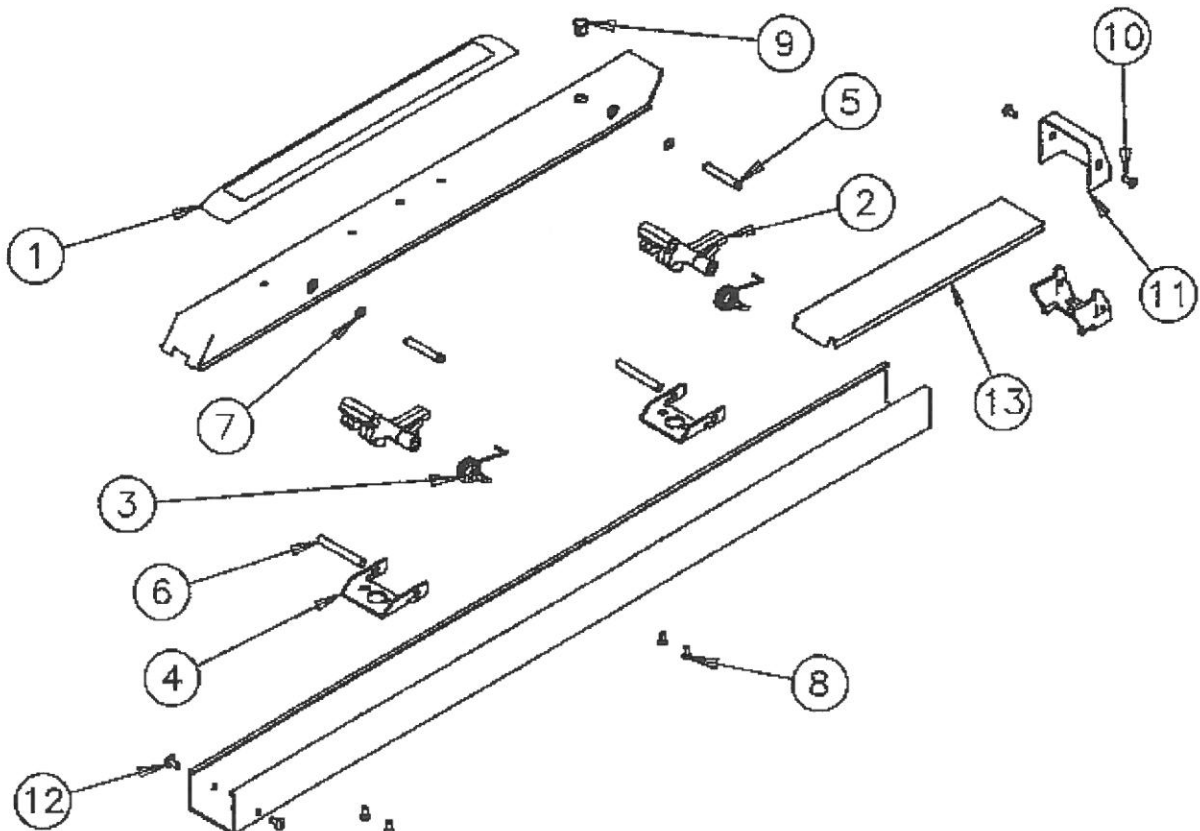
Page No    Rev  
80.3        D  
01/01/2003

ITEM	ASSY NO.	PART NO.	DESCRIPTION	QTY
1		809 KIT **	TOUCH BAR REPLACEMENT KIT	1
2		68-3609	CONNECTING ARM	2
3		68-0236	SPRING	2
4		68-0943	BRACKET CONNECTING ARM	2
5		68-0229	PIVOT PIN PUSH	2
6		68-0945	PIVOT PIN MOUNT	2
7		01-0098	RETAINING RING	2
8		01-1236	SCREW #8-32 X 3/8	4
9		01-4537	HOLE PLUG	1
10		97-0052	SCREW #8-32 X 5/16 *	2
11		565 KIT $\emptyset$	END CAP KIT STANDARD *	1
		665 KIT $\emptyset$	END CAP KIT FLUSH *	
12		01-1141	SCREW #8-32 X 3/8 *	2
13	SEE 80.4 FOR DETAILS		RAIL INSERT	1
—		68-2596	CAM DOGGING KIT	1

\* SPECIFY FINISH

\*\* 809 KIT INCLUDES TOUCH BAR AND ASSOCIATED HARDWARE (REPLACES 561 KIT)

$\emptyset$  WHEN REPLACING ANY END CAP WITH NEW STANDARD END CAP ORDER 565 KIT BY FINISH  
 WHEN REPLACING ANY END CAP WITH NEW FLUSH END CAP ORDER 665 KIT BY FINISH  
 END CAP KITS INCLUDE MOUNTING BRACKET, END CAP, AND REQUIRED SCREWS.



80 series  
Parts List

MOUNTING RAIL  
INSERTS

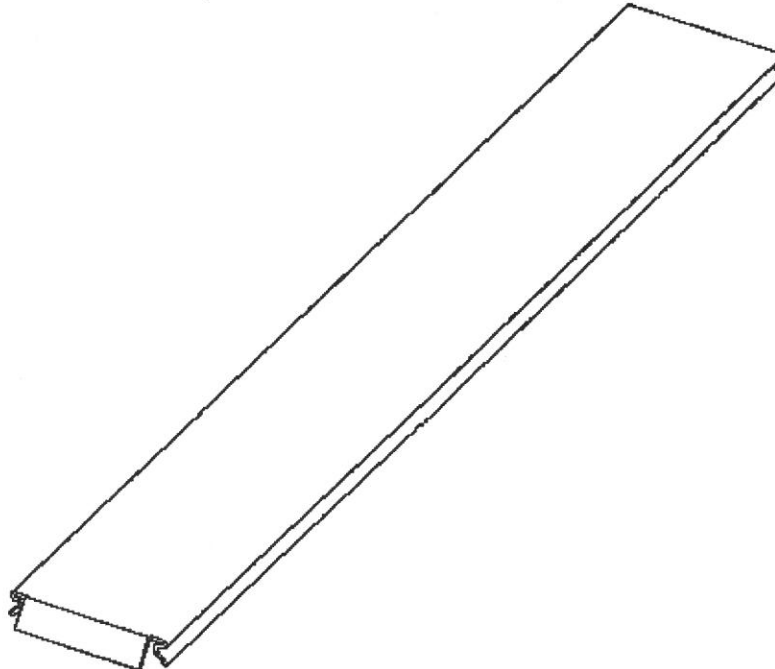
Parts List

Page No 80.4  
Rev B

8/18/2003

PREFIX	ASSY NO.	PART NO.	DESCRIPTION
STANDARD INSERTS, NEW FACTORY SUPPLIED 55-			
STD, 12- 19- 53- 58- OR 55- SUPPLIED IN COMB. WITH ABOVE PREFIXES		68-0549	INSERT (F WIDE) *
		68-0550	INSERT (E WIDE) *
		68-0551	INSERT (G WIDE) *
		68-0552	INSERT (G NARROW) *
		68-0553	INSERT (J NARROW) *
		68-0554	INSERT (J WIDE) *
		68-1375	INSERT (E NARROW, F NARROW) *
OLD FACTORY SUPPLIED 55-, 55- RETROFITS			
55- SUPPLIED IN COMB. WITH FOLLOWING PREFIXES NONE, 12- 19-, 58- (16- IN PUSH)	855-1 KIT		INSERT ASSEMBLY (F WIDE) *
	855-2 KIT		INSERT ASSEMBLY (E NARROW, F NARROW) *
	855-3 KIT		INSERT ASSEMBLY (G WIDE) *
	855-4 KIT		INSERT ASSEMBLY (G NARROW, J WIDE) *
	855-5 KIT		INSERT ASSEMBLY (E WIDE) *
	855-6 KIT		INSERT ASSEMBLY (J NARROW) *

\* SPECIFY FINISH



80 series  
Parts List

LS/LP/LR8600

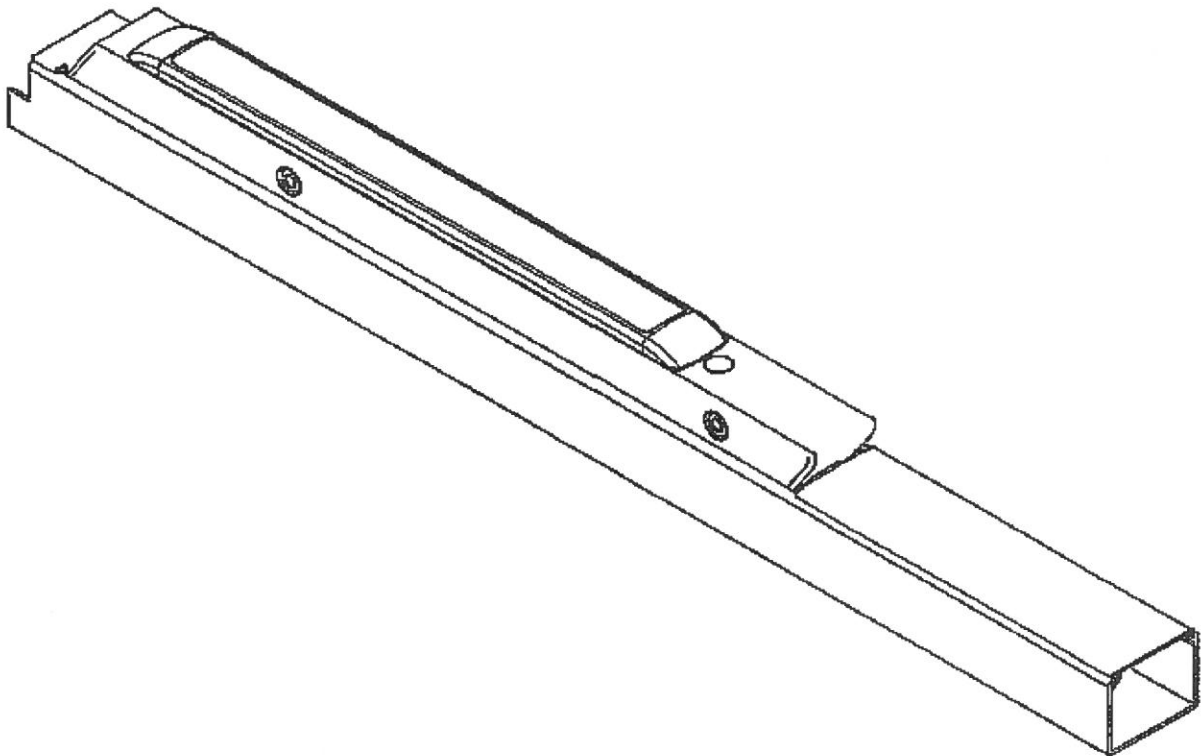
Parts List

Page No REV  
80.5 B

8/18/2003

RAIL ASSEMBLY LESS END CAP AND MOUNTING BRACKET

SIZE	DOOR WIDTH	CAM LOCKDOWN (NO PREFIX)	CYLINDER LOCKDOWN (16 PREFIX)	FIRE EXIT HARDWARE (12 PREFIX)
L	36"	68-4242	68-4246	68-4250
M	42" OR 44"	68-4243	68-4247	68-4251
N	46" OR 48"	68-4244	68-4248	68-4252



80 series  
Parts List

RAIL ASSEMBLY  
LS/LP/LRB600

Parts List  
Page No. . REV.  
80.6A C  
1-29-2004

RAIL ASSEMBLY  
LESS END CAPS

LS/LP/LRB600	STANDARD DOGGING RAIL	L M N	68-4242 68-4243 68-4244
--------------	-----------------------------	-------------	-------------------------------

ITEM	ASSY NO.	PART NO.	DESCRIPTION	QTY
1		809 KIT **	TOUCH BAR REPLACEMENT KIT	1
2		68-0618	PUSH RAIL (F) * (USE FOR "L" RAIL)	1
		68-0616	PUSH RAIL (J) * (USE FOR "M" RAIL)	
		68-0617	PUSH RAIL (G) * (USE FOR "N" RAIL)	
3		01-0098	RETAINING RING	2
4		68-0229	PIVOT PIN PUSH RAIL *	2
5		68-3609	CONNECTING ARM ASSEMBLY	2
6	68-4242 (L)	68-0945	PIVOT PIN MOUNTING RAIL	2
7	68-4243 (M)	68-0943	BRACKET CONNECTING ARM	2
8	68-4244 (N)	01-1236	SCREW #6-32 X 3/8 *	4
9		68-1319	MOUNTING RAIL (L) *	1
		68-1320	MOUNTING RAIL (M) *	
	68-1321	MOUNTING RAIL (N) *		
10		68-0236	SPRING	2
11		68-1324	MOUNTING RAIL INSERT (L) *	1
		68-1325	MOUNTING RAIL INSERT (M) *	
		68-1326	MOUNTING RAIL INSERT (N) *	
13		68-2596	LOCKDOWN BUTTON KIT	1
24				
21		68-1315	MOUNTING PLATE	1
22		68-1316	END CAP *	1
23		97-0052	SCREW #8-32 X 5/16 *	2
-		68-4383	MOUNTING PACK INC ITEM 21	1

\* SPECIFY FINISH

\*\* 809 KIT INCLUDES TOUCH BAR AND  
ASSOCIATED HARDWARE

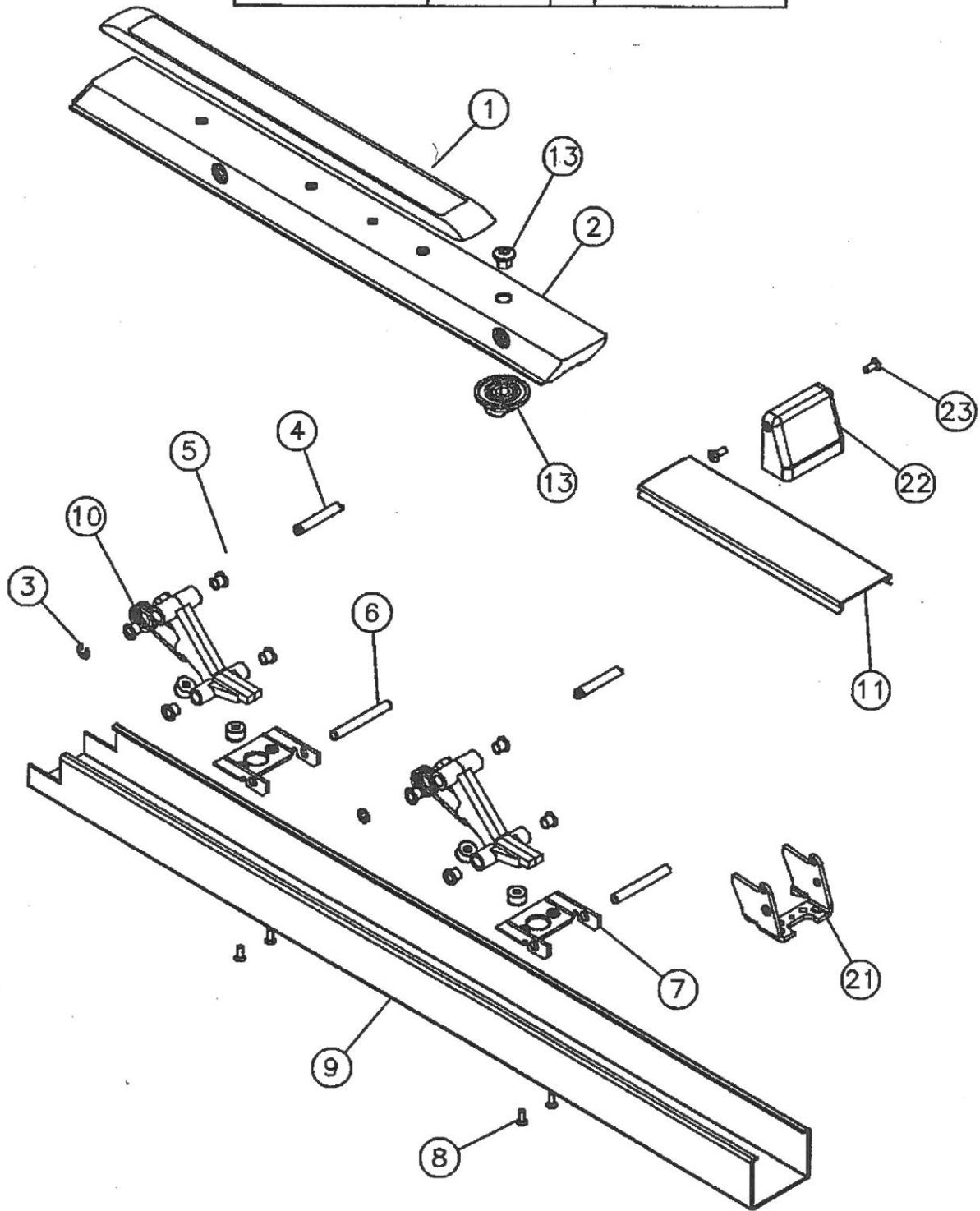
THIS PAGE MUST FACE 80.6B

8 series  
Parts List


RAIL ASSEMBLY  
LS/LP/LR8600

Parts List  
Page No. REV.  
80.6B C  
1-29-2004

		RAIL ASSEMBLY LESS END CAPS	
LS/LP/LR8600	STANDARD	L	68-4242
	DOGGING	M	68-4243
	RAIL	N	68-4244



THIS PAGE MUST FACE 80.6A


**80 series**  
**Parts List**

RAIL ASSEMBLY

12-LS/LP/LR8600

**Parts List**  
 Page No. REV.  
 80.7 C  
 1-28-2004

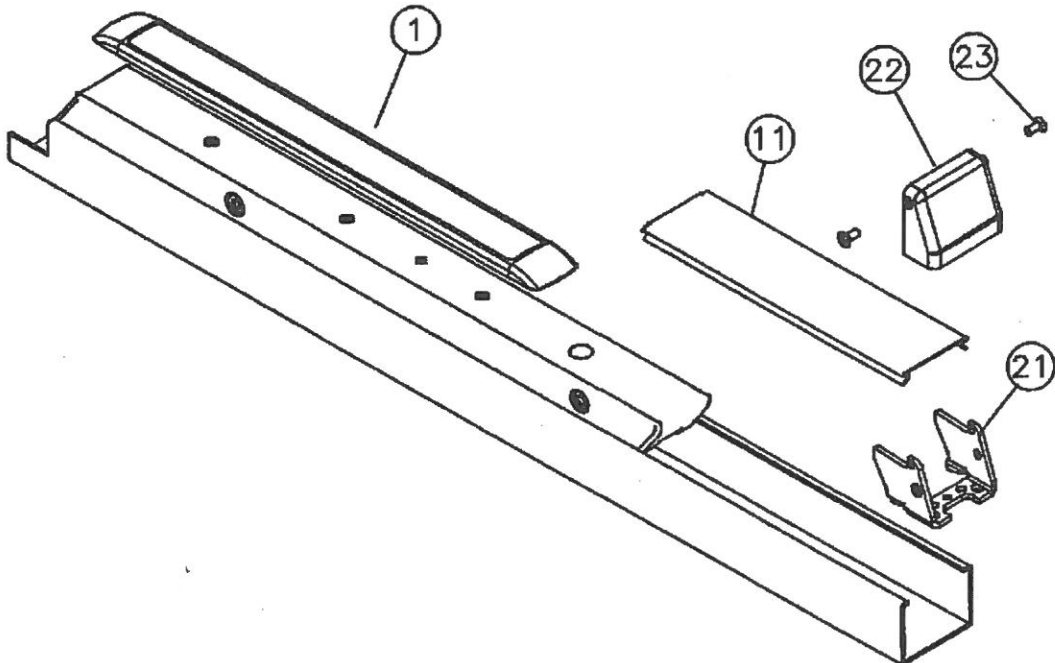
RAIL ASSEMBLY  
LESS END CAPS

12-LS/LP/LR8600	NO DOGGING RAIL	L M N	68-4250 68-4251 68-4252
-----------------	--------------------	-------------	-------------------------------

ITEM	ASSY NO.	PART NO.	DESCRIPTION	QTY
1		809 KIT **	TOUCH BAR REPLACEMENT KIT	1
11		68-1324	MOUNTING RAIL INSERT (L) *	1
		68-1325	MOUNTING RAIL INSERT (M) *	
		68-1326	MOUNTING RAIL INSERT (N) *	
24				
21		68-1315	MOUNTING PLATE	1
22		68-1316	END CAP *	1
23		97-0052	SCREW #8-32 X 5/16 *	2
—		01-4537	HOLE PLUG	1
—		68-4383	MOUNTING PACK INC ITEM 21	1

\* SPECIFY FINISH

\*\* 809 KIT INCLUDES TOUCH BAR AND ASSOCIATED HARDWARE





80 series  
Parts List

RAIL ASSEMBLY  
16-LS/LP/LR8600

Parts List

Page No. REV.  
80.8 A C

1-28-2004

RAIL ASSEMBLY  
LESS END CAPS

16-LS/LP/LR8600	CYLINDER DOGGING RAIL	L M N	68-4246 68-4247 68-4248
-----------------	-----------------------------	-------------	-------------------------------

ITEM	ASSY NO.	PART NO.	DESCRIPTION	QTY
1		809 KIT **	TOUCH BAR REPLACEMENT KIT	1
2		68-0618	PUSH RAIL (F) * (USE FOR "L" RAIL)	1
		68-0616	PUSH RAIL (J) * (USE FOR "M" RAIL)	
		68-0617	PUSH RAIL (G) * (USE FOR "N" RAIL)	
3		01-0098	RETAINING RING	2
4		68-0229	PIVOT PIN PUSH RAIL *	2
5		68-3609	CONNECTING ARM ASSEMBLY	2
6	68-4246 (L)	68-0945	PIVOT PIN MOUNTING RAIL	2
7	68-4247 (M)	68-0943	BRACKET CONNECTING ARM	2
8	68-4248 (N)	01-1236	SCREW #6-32 x 3/8 *	4
9		68-1319	MOUNTING RAIL (L) *	1
		68-1320	MOUNTING RAIL (M) *	
	68-1321	MOUNTING RAIL (N) *		
10		68-0236	SPRING	2
11		68-4255	MOUNTING RAIL INSERT (L) *	1
		68-4256	MOUNTING RAIL INSERT (M) *	
		68-4257	MOUNTING RAIL INSERT (N) *	
12		01-4537	HOLE PLUG	1
14		68-0772	FILLER	1
15		01-1220	SCREW #6-32 x 3/8	4
16		68-3020	LOCKDOWN CAM ASSY	1
24				
17		68-0701	CYLINDER NUT	1
18		97-0349	CYLINDER RING #41 CYLINDER *	1
19		—	CYLINDER * $\phi\phi$	2
21		68-1315	MOUNTING PLATE	1
22		68-1316	END CAP *	1
23		97-0052	SCREW #8-32 x 5/16 *	2
—		68-4383	MOUNTING PACK INC ITEM 21	1

\* SPECIFY FINISH

\*\* 809 KIT INCLUDES TOUCH BAR AND  
ASSOCIATED HARDWARE

$\phi\phi$  SPECIFY #41 CYLINDER BY  
KEYING REQ.

THIS PAGE MUST FACE 80.8B

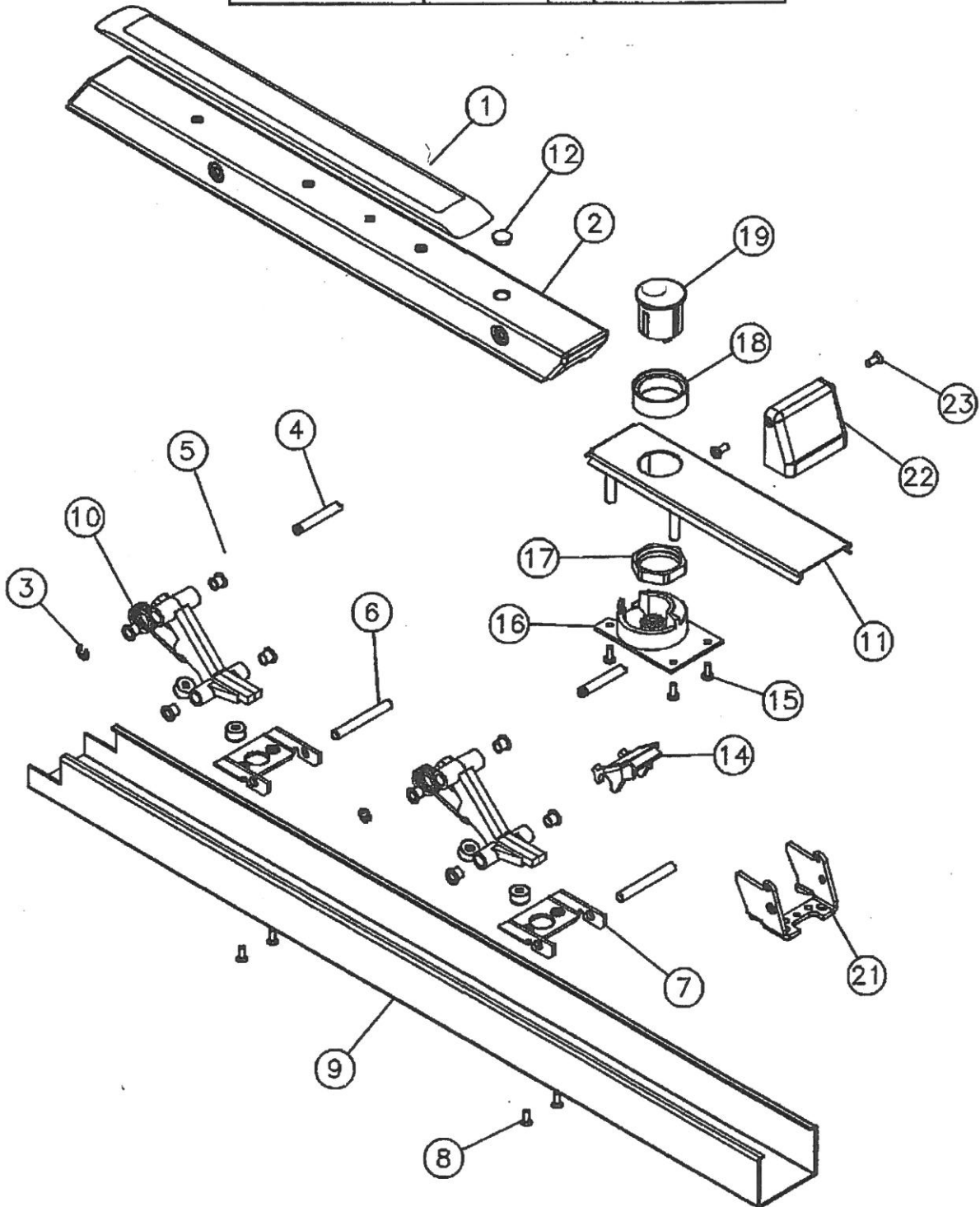
80 series  
Parts List

RAIL ASSEMBLY  
16-LS/LP/LR8600

Parts List

Page No. REV.  
80.8B C  
1-28-2004

		RAIL ASSEMBLY LESS END CAPS	
16-LS/LP/LR8600	CYLINDER DOGGING RAIL	L M N	68-4246 68-4247 68-4248



THIS PAGE MUST FACE 80.8A

# 80 SERIES PARTS LIST

816 KIT

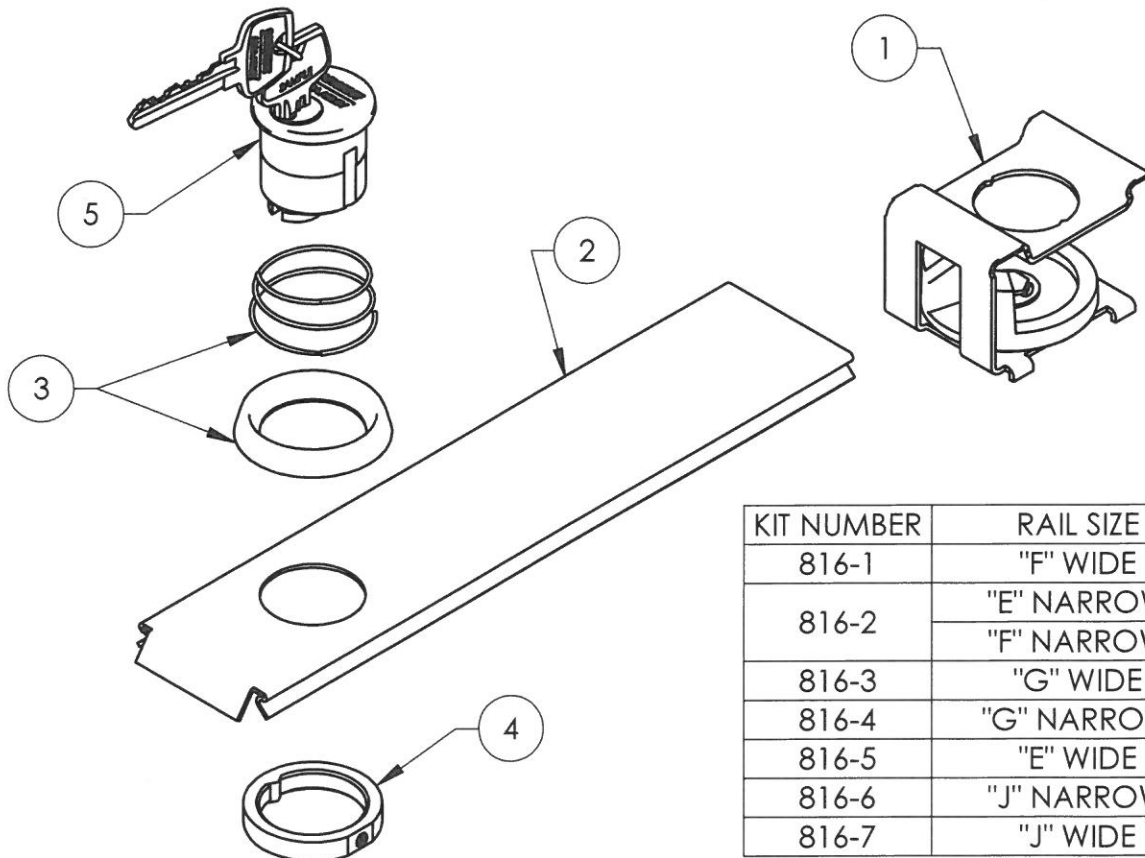
## PARTS LIST

PAGE No. 80.9  
REV. D

ITEM NO.	QTY	PART NUMBER	DESCRIPTION	REMARKS
1	1	97-3230	16- CYLINDER DOGGING ASSEMBLY	
2	1	68-0767	"F" WIDE RAIL INSERT	SEE NOTE 2
		68-0768	E WIDE RAIL INSERT	
		68-0769	"G" WIDE RAIL INSERT	
		68-0770	"G" NARROW, "J" WIDE RAIL INSERT	
		68-1376	"E" & "F" NARROW RAIL INSERT	
		68-1465	"J" NARROW RAIL INSERT	
3	1	13-2131	CYLINDER RING ASSEMBLY	SEE NOTE 2
4	1	68-6040	RETAINING COLLAR ASSEMBLY	
5	1	13-2872	CYLINDER & KEY ASSEMBLY	
6	1	01-0288	SOCKET SCREW KEY (WRENCH)	NOT SHOWN

**NOTES:**

- FOR CYLINDER, SPECIFY "MORTISE" CYLINDER, FINISH AND KEYING REQUIREMENTS.
- SPECIFY FINISH FOR INSERT AND COLLAR.



KIT NUMBER	RAIL SIZE
816-1	"F" WIDE
816-2	"E" NARROW
	"F" NARROW
816-3	"G" WIDE
816-4	"G" NARROW
816-5	"E" WIDE
816-6	"J" NARROW
816-7	"J" WIDE

Copyright © 2011 Sargent Manufacturing Company, an ASSA ABLOY Group company. All Rights reserved.