

7800/8200 Mortise Locks Multi-function Lockbody Options 04, 05, 06, 13, 31, 36, 37, 38

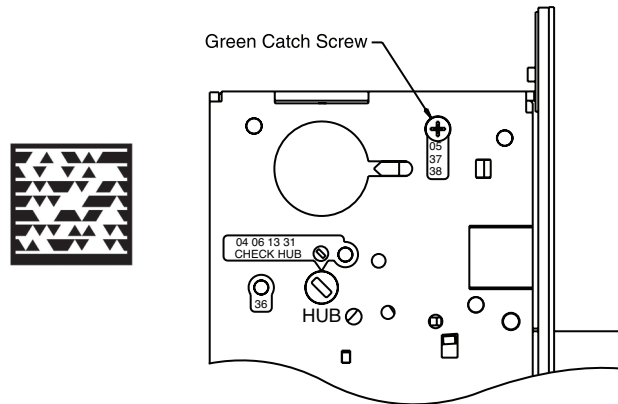
How to Change Function of Lock:

Green catch screw must be located as designated on lock case to create desired function.

- 3 locations: One for 05, 37 & 38 functions
One for 04, 06, 13 & 31 functions
And one for 36 function

Note: When moving green catch screw to 04, 06, 13 & 31 functions, hub position must be at 45° as shown on lockcase.

*See How to Change Hand of Lock, page 6.



Items needed to create each of the following functions:

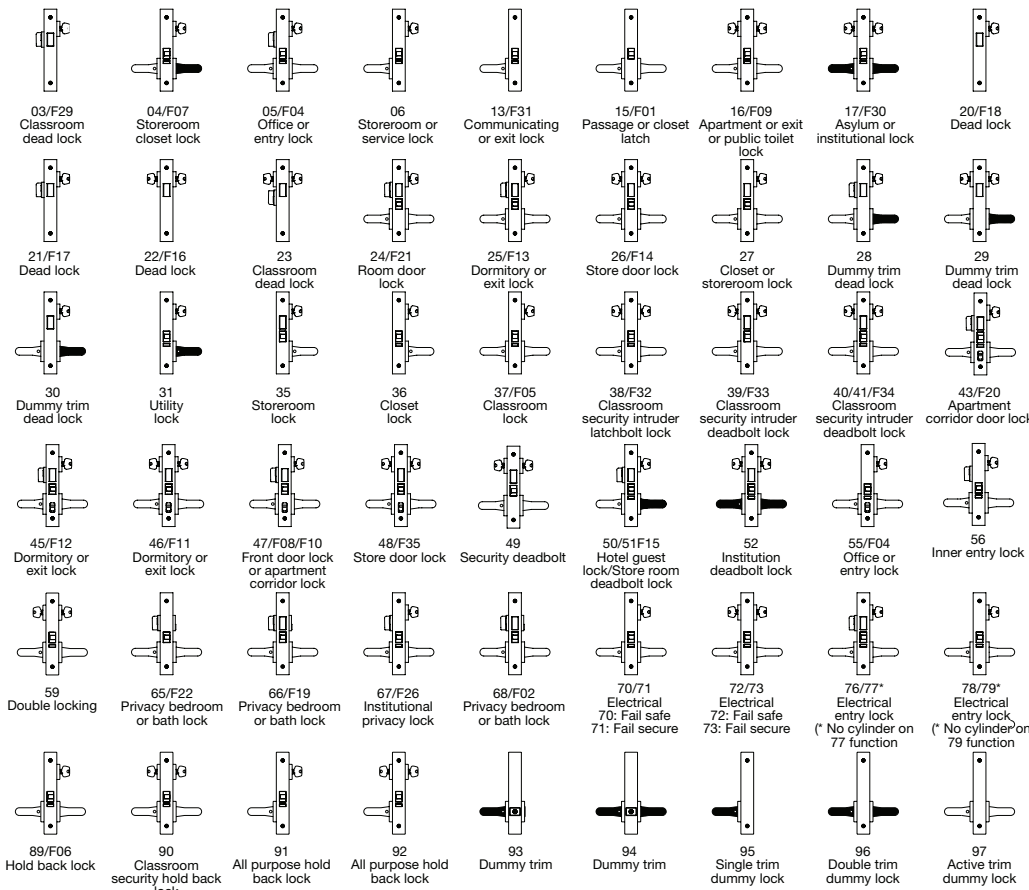
Function	Outside Lever	Inside Lever	Trim One Side Kit	Outside Cylinder	Inside Cylinder	Thumb Turn
04	X	X		X		
05	X	X		X		X***
06		X	X	X		
13		X	X			
31		X	X	X		
36		X	X	X		
37	X	X		X		
38	X	X		X	X	

*** 130 KB thumb turn is used with rose trim only, escutcheon trims requiring thumb turns, must be preassembled at the factory

#41 Cylinder is standard for both single & double cylinder functions for 1-3/4" thick door

NOTE: Trim-one-side functions always require an inside trim assembly which can be used on the inside or outside of the door (to order Trim one-side kit (for all trim except PT or FE) order part # 82-4611.

SARGENT 8200 Series Mortise Lock Function List



Note: Shaded Levers are Rigid at all times
NOTE: 05 FUNCTION HAS A THUMB TURN ON THE INSIDE FACE OF DOOR AND 55 FUNCTION HAS TOGGLE ON LOCK FRONT

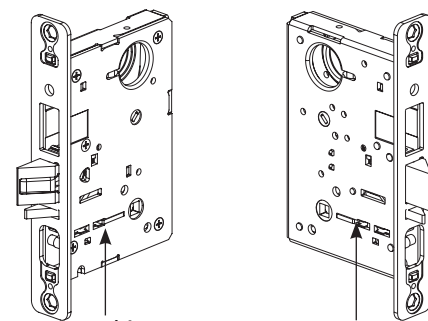
How To Change Hand of Lock

Note: Red surface of locking piece must face secure side of door.

To rotate locking piece:

1. Position lockbody with red surface of locking piece visible
2. Insert blade type screwdriver into locking piece slot to rotate locking piece
3. Push locking piece toward back of lock body and rotate 180° until RED surface shows on opposite side

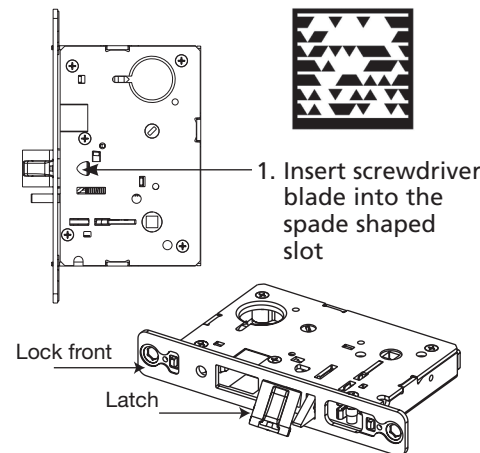
Note: 04, 06, 13 and 31 Functions require:
(a) Green catch screw to be removed
(b) Rotate hub to 45 degree position
(c) Rotate locking piece for required hand
(d) Red surface faces locked side of door
(e) Rotate hub to the original 45 degree position as shown on lockcase
(f) Green catch screw is then reinstalled



Locking piece slot

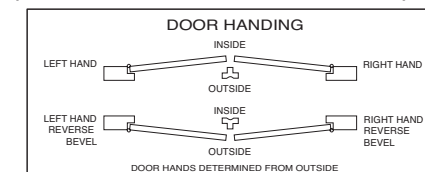
Red color indicates locked side of door or hold back side (91 and 92 Functions)

Note: Beveled surface of latch must face strike. The deadlatch is self adjusting. To change hand of latch:



1. Insert screwdriver blade into the spade shaped slot
2. Rotate screwdriver 90° to push latch out until back of latch clears lock front. Then rotate latch 180°. Latch will then re-enter lockbody.

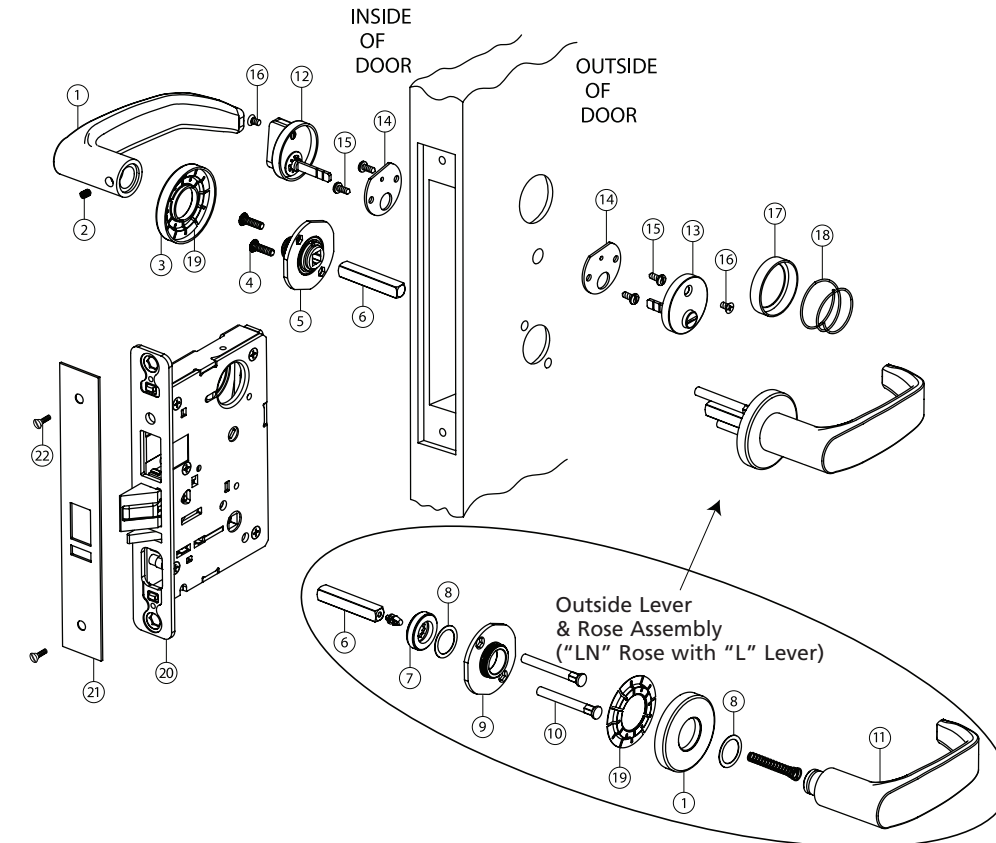
(Note: Latch can not be unscrewed)



Instructions for Installing SARGENT 7800 Knob/8200 Lever Mortise Lock

U.S. Patent Numbers: 5,678,870; 7,188,870 & 7,452,012

Standard 7800/8200 Mortise Lock Sectional Trim Description & Part Number



Installation for levers and knobs is identical

Part No.	Description	Req.	
1	Varies	Inside lever handle - Consult factory	1
2	Handle set screw 1/4-28 UNF	1	
3	81-0093	Rose - "LN" design	2
4	01-1495	Machine screw #8-32 x 5/8"	2
5	82-3088	Inside adapter & plate assembly	1
6	82-0368	Spindle	2
7	82-0184	Cap nut	1
8	01-0079	Washer	2
9	82-3082	Adapter & plate assembly (LN design)	1
10	81-0723	Mounting post	2
11	Outside lever handle - Consult factory	1	
12	77-3279	Turn lever assembly - 130KB design	1
13	77-2595	Emergency button assembly-184KB	1
14	77-0551	Backplate	2
15	01-4370	Machine screw #6-32 x 3/8"	4
15	01-1491	Wood screw #6 x 3/8"	4
16	01-1154	Machine screw #6-32 x 1/4"	2
17	77-0509	KB cylinder rosette (for 8200)	-
18	13-0140	Compression spring	-
19	82-0612	Non-loosening wave spring	2
20	Varies	Lockbody	1
21	Varies	Outside Front	1
22	01-1028	Machine Screw #8-32 x 1/4"	2

Tools Required:

- Phillips screwdriver (standard size)
- 1/8" Allen wrench
- Phillips & flat tip screwdriver

**Installation Instructions for 7800/8200 Series
Mortise Locks (Except PT Trim and FE Trim)**
See particular trim section for your lock

(1) Important: Check template A7057 to prep door for function holes, size & location. Verify strike location according to template. Clean door pocket and verify hand of lock

(2) Slide lock in door

(3) Slide outside lever & rose assembly (or lever & escutcheon assembly) through the door and lock body

Note: Keep door open while installing lock

Note: If installing trim one side, see separate instruction sheet

(4) Slide cylinder (A) through spring (B) & collar (C) (or escutcheon) and thread into lock until cylinder face is flush with collar (C) (or escutcheon edge). The key slightly pulled out of cylinder will help to thread the cylinder

Note: SARGENT logo must be horizontal & on the top portion of the cylinder

(5) By hand with # 2 Phillips screwdriver, tighten cylinder clamp screw

(6) Secure lock in door with two wood screws #12 x 1-1/4" or machine screws #12-24 x 1/2" (D)

(7) Slide spindle (E) into lockbody hub

(8) Slide adapter & plate assembly (F) over spindle & secure with two #8-32 screws (G)

(9) Screw rose (J) firmly onto adapter & plate assembly (F) (or attach escutcheon)

(10) Attach inside lever and secure with 1/8" Allen wrench. Verify Lock is operating correctly prior to closing door

(11) Assemble thumbturn/emergency release according to instructions on bag

(12) Check for proper operation

(13) Attach outside front (H) with two #8-32 x 1/4" flat head screws (I)

Note: To check for proper lock operation by function number (ex: 8205 = 05 function) - see 7800/8200 catalog (www.sargentlock.com).

**Instructions for TE, CE, LE1, KE1, LE3,
KE3, LW1 and KW1 Escutcheon**

** Note: LE3 and KE3 are designed for Concealed Cylinders, Concealed Cylinders are installed prior to attaching the Escutcheons.

Note: Cylinder collar(s) are required for functions with two cylinder and cylinders longer than # 41 (1-1/8")

Through-bolt the inside escutcheon to the outside escutcheon with two #8-32 x 1-7/8" screws (item #I)
Note: Screw heads should be visible on inside escutcheon

**Instructions for LE2, LE4,
KE2 and KE4 Escutcheon**

Note: LE4 and KE4 are designed for Concealed Cylinders: Concealed Cylinders are installed prior to attaching the Escutcheons.

Note: Cylinder collar(s) are required for functions with two cylinder and cylinders longer than # 41 (1-1/8")

The outside escutcheon must be through-bolted with items K & L prior to attaching the inside escutcheon. Position inside escutcheon over item #L and secure with set screws (item #J) using .050" Allen wrench

Instructions for WT Escutcheon

Note: Cylinder collar(s) are required for functions with two cylinder and cylinders longer than # 41 (1-1/8")

The inside & outside escutcheons are surface applied using eight #6 x 3/4" wood screws or eight #6-32 x 3/4" machine screws (item #M)

**Instructions for LS & KS
Security Escutcheon**

Note: The cylinder is installed under the escutcheon. Once the escutcheon is installed, the cylinder should be backed out toward the escutcheon as far as possible. Once positioned correctly, secure cylinder in the lock body.

Through-bolt the inside escutcheon to the outside escutcheon with four 1/4-20 x 1-3/8" screws (item #N)
Note: Screw heads are visible on inside escutcheon

Note: Double cylinder functions use the Cylinder Retaining Cap (supplied). Both cylinders are installed followed by the Cylinder Retaining Cap over each cylinder, then the escutcheons. The cylinders should then be backed out and secured in place.