

5800 SERIES

Cast Iron Door Closers



INTRODUCTION

Contents

Introduction	2
Features & Benefits.....	3
Finishes	4
How to Order	5
Arm Options	5
Model/Part Numbers.....	7
Accessories	8

5800 Series Cast Iron Door Closers

With its modern design and adjustable operation, ASSA ABLOY ACCENTRA® 5800 Series Cast Iron Door Closers provide an attractive solution for retail, office, government and other commercial facilities. Heavy-duty and hold open arms, along with adjustable spring size, backcheck, closing and latch speed, provide a flexible and economical closer that you can trust for dependable service. The 5800 Series is certified to ANSI/BHMA Grade 1 requirements for long life and reliability, and offers a 10 year warranty.

WARNING

This product can expose you to lead which is known to the state of California to cause cancer and birth defects or other reproductive harm. For more information go to www.P65warnings.ca.gov.




FEATURES & BENEFITS



Features

- ANSI/BHMA A156.4 Grade 1 certified
- Adjustable spring sizes 1 - 6
- Cast iron closer body
- Standard and heavy-duty arms available as hold open or non-hold open
- Adjustments for backcheck, closing and latch speed
- Tri-packed for parallel, regular or top jamb installation
- Sleeve nuts and bolts provided with each closer
- Retrofit for LCN 4040XP
- Non-handed
- Plastic cover
- 10 year warranty
- Delayed action; specify 5801DL (optional)
- Door weight: 250 lbs.

Compliance Standards

- Certified for ANSI/BHMA A156.4 Grade 1 
- UL10C positive pressure up to 3 hours 
- Americans with Disabilities Act (ADA) compliant 

Benefits

- **Reliable:** Adjustable spring power, latch and closing speeds ensure positive latching
- **Flexible:** Choice of standard or heavy-duty arms and adjustable spring power meets needs of any application
- **Hassle-Free Retrofits:** Easily replaces competitive closers
- **Strong and Durable:** ANSI/BHMA Grade 1 certified for long life

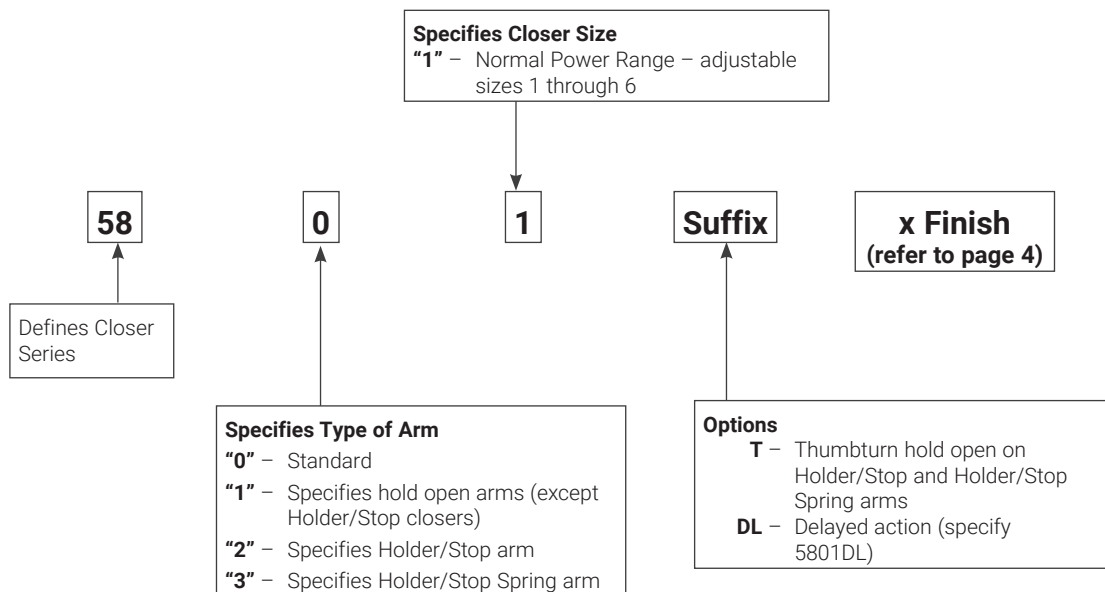
CAUTION: Door Closers for Low Opening Force Applications:

Door closers installed in openings required to meet the requirements of the Americans With Disabilities Act or ANSI/BHMA Standard A117.1, when adjusted to meet those requirements, may not provide adequate closing power to dependably close and latch the door based on opening or site conditions.

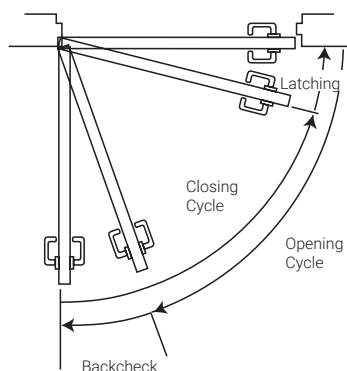
FINISHES

ANSI/BHMA Code Finish Description		
689 Aluminim Painted	690 Dark Bronze Painted	BSP Black Suede Powder Coat
		

HOW TO ORDER



Door Closing Latching Cycle



Arms

Non-Hold Open

Self-closes door every time door is opened. Auxiliary stop (by others) required except when using the Holder/Stop arm.

Hold Open

Achieved by means of friction or ball and detent/roller. Friction hold open has a range of 90° to 180° using template location and mechanical adjustment. Ball and detent or roller hold open is effective in a range of 85° to 110°.

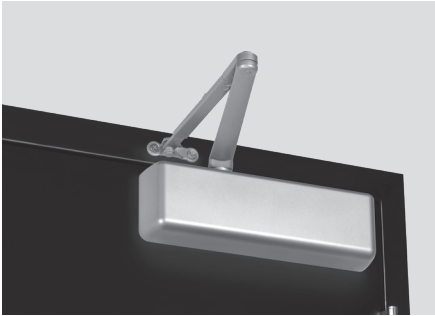
Hold open arm door closers are not permitted to be used on fire door assemblies.

Notes:

- For heavy-duty parallel rigid arm applications, specify 5821 or 5821T, stop is removable.
- Before installing a door closer, verify the accessibility, fire, and life-safety requirements that are in effect. This includes the mounting height and projection into the clear opening. Check the adopted state and local building codes and consult the Authority Having Jurisdiction (AHJ).
- To maintain the warranty and ensure proper operation of the product, follow the installation instructions & templates and install on the inside of the building.
- Consult NFPA 80 for the hinge requirements on a fire door.
- Failure to use fasteners supplied with closer may void factory warranty.
- Optional fasteners are available for a variety of applications. Consult the door and frame manufacturer to ensure the proper fasteners are used to maintain certifications.
- Sizing charts are based on 1-3/4" x 7" standard weight doors swinging to 110°. Other application conditions (i.e. larger door heights or weight) may require larger size closer. Adjusting the spring power to meet the low opening force requirements of the Americans With Disabilities Act or ANSI/BHMA Standard A117.1, may not provide adequate closing power to dependably close and latch the door in some conditions (i.e. air movement from wind gusts or building stack pressure).

ARM OPTIONS

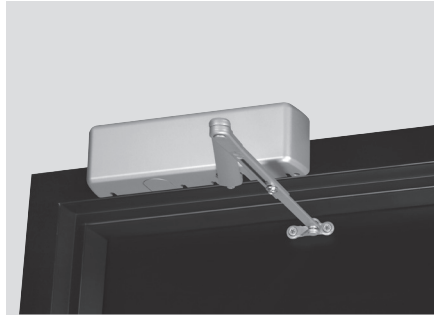
Regular Arm



Non-hold open arm shown, hold open application available.

- Pull-side application
- Closer mounted on the door

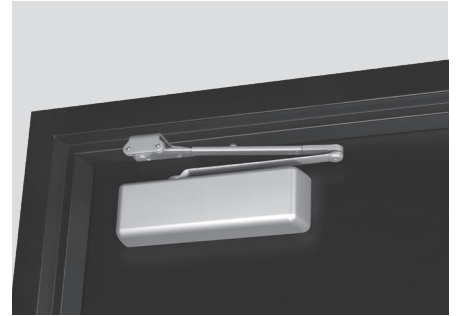
Top Jamb



Non-hold open arm shown, hold open application available.

- Push-side application
- Closer mounted on the frame
- Minimum top rail = 2-1/4" (57mm)
- Maximum frame reveal = 2-3/4" (70mm)

Parallel Arm



Non-hold open arm shown, hold open application available.

- Push-side application
- Closer mounted on the door

Holder/Stop Arm



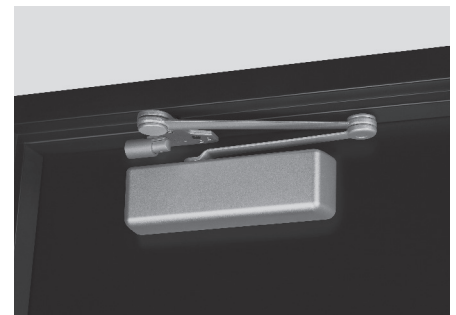
5821T (hold open) shown

- Push-side application
- Heavy-duty arm
- Stop is removable



5821 (non-hold open, without stop) shown

- Push-side application
- Heavy-duty arm
- Stop is removable



5831 (non-hold open, with spring) shown

- Push-side application
- Heavy-duty arm
- Buffer spring provides greater protection at the end of door opening cycle
- Spring is removable

MODEL/PART NUMBERS

Model Number	Description
5801	Non-Hold Open Tri-Packed
5801DL	Non-Hold Open Tri-Packed, Delayed Action
5811	Hold Open Tri-Packed
5821	Heavy-Duty Non-Hold Open Parallel Arm with Removable Stop
5821T	Heavy-Duty Hold Open Parallel Arm with Thumbturn and Removable Stop
5831	Heavy-Duty Non-Hold Open Parallel Arm with Spring and Removable Stop
5831T	Heavy-Duty Hold Open Parallel Arm with Thumbturn, Spring and Removable Stop

Note: for heavy-duty parallel rigid arm applications, specify 5821 or 5821T, stop is removable.

See page 5 for more how to order info.

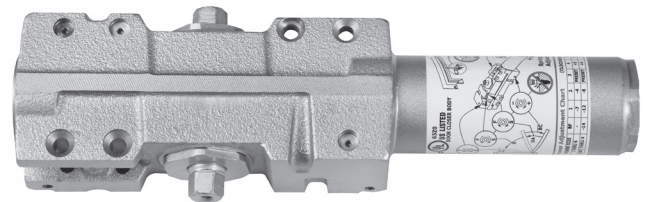
Miscellaneous Parts*	
Part Number	Description
5800COV	Full Plastic Cover
5800SP	Screw Pack
2730Kit	Door Saver Spring Stop

*Specify finish when ordering.

Cover Dimensions		
Width	Length	Projection
3-1/2" (89mm)	12-1/4" (311mm)	2-1/4" (57mm)

Optional Fasteners	
Part Number	Description
SN-134	Sleeve Nuts
TBGN134-47	Through-Bolts & Grommet Nuts

Note: Sleeve nuts furnished standard with all models.

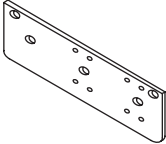
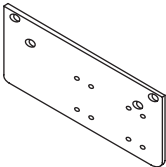


2730Kit



ACCESSORIES

Closer Mounting Plates

	<p>5800RDP Narrow Frame Drop Plate (regular arm): Required for hinge side mount where top rail is less than 3-3/4" (95mm). Plate requires 2" (51mm) minimum top rail.</p>
	<p>5800PDP Narrow Top Rail Drop Plate (parallel arm): Required for parallel arm mounting where top rail is less than 5-1/2" (140mm), measured from the stop. Plate requires 2" (51mm) minimum top rail.</p>

Note: All measurements are Inches/mm.

NOTES

The ASSA ABLOY Group is the global leader in access solutions.
Every day, we help billions of people experience a more open world.

ASSA ABLOY Opening Solutions leads the development within door openings and products for access solutions in homes, businesses and institutions. Our offering includes doors, frames, door and window hardware, mechanical and smart locks, access control and service.

ACCENTRA®
ASSA ABLOY

TECHNICAL SUPPORT

(troubleshooting, product use and application, returns)

Tel: 855-557-5078

Email: techsupport.accentra@assaabloy.com

CUSTOMER SUPPORT

(orders, product configuration, pricing, lead-time)

Tel: 855-557-5078 x2

Email: Customerservice.Accentra@assaabloy.com

U.S.A.:
ASSA ABLOY ACCENTRA®
225 Episcopal Road
Berlin, CT 06037-4004
Tel: 1-800-438-1951
Fax: 1-800-338-0965
www.accentra-assaabloy.com

Canada:
ASSA ABLOY Door Security Solutions Canada
160 Four Valley Drive
Vaughan, Ontario L4K 4T9
Tel: 1-800-461-3007
Fax: 1-800-461-8989
assaabloydss.ca

International:
ASSA ABLOY Americas International
Tel: 1-905-821-7775
Fax: 1-905-821-1429
assaabloyai.com